



**Huskie  
TOOLS®**



**Instruction Manual  
Model RI-500  
With Parts List**



# RI-500 SPECIFICATIONS

## CAPACITY:

Copper and Aluminum Cable: 500MCM [400mm<sup>2</sup>] Stranded

Copper and Aluminum Cables Only. No Steel, Hard Drawn Copper, or Hardened Aluminum Alloys

# RI-500 OPERATING INSTRUCTIONS

## Cutting a Cable:

1. Insure the cutter handles are unlocked.
2. With no cable inserted into the cut entry, cycle the blade forward through the ratchet simply by pushing it through. This is to release the blade for an open end entry to the cutting area.
3. Insert the cable into the cutting area.
4. Push the moving blade forward until it contacts the ratchet gears and “clicks.”
5. Cycle the handles back-and-forth several times. The blade will ratchet forward in steps for each handle motion until the cable is completely cut through.

## Emergency Blade Release and Opening:

1. Press down on the Blade Release Thumb Ratchet located on the right hand side of the tool. The ratchet should open and release contact with the moving blade.
2. While holding down the blade release ratchet, use the left hand to pull the moving blade back out of the ratcheting mechanism.

## Locking the Handles:

1. Completely close the handles and hold them in place.
2. Turn the Lock/Release lever upward and lock under the tab on the opposite handle.

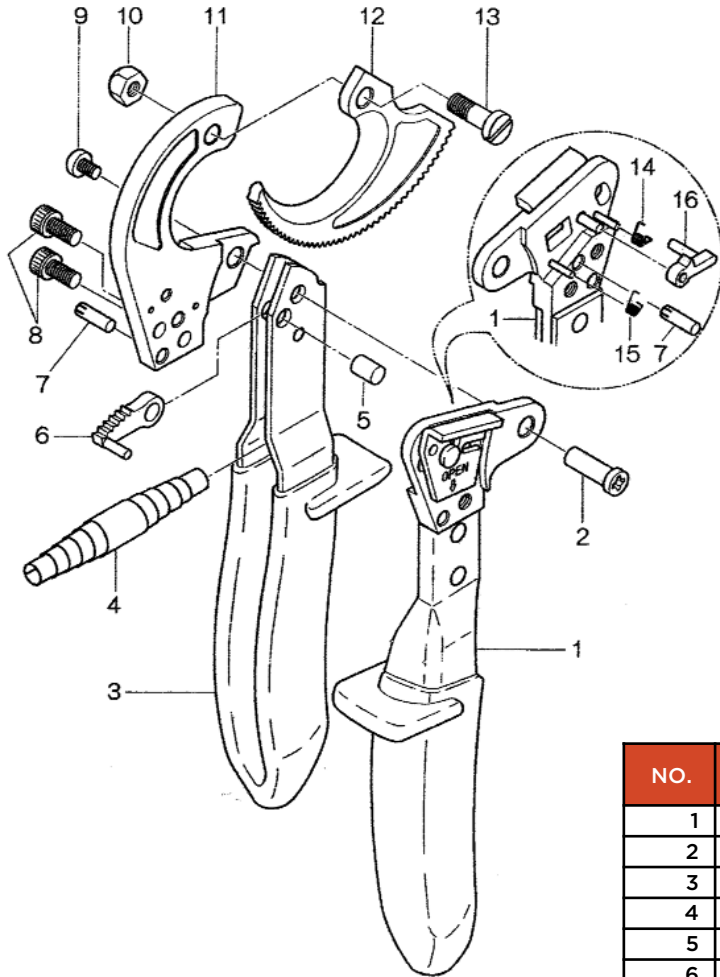
## Blade Sharpening and Replacement:

The blades may periodically become dulled after repeated use. Grinding the edges to keep them sharp and free of burrs is recommended.

In the event the blades become damaged, replace the blades. To do this, simply remove the screws, washers, nuts, and blade. Replace with new blade and reassemble the tool in the reverse order it was disassembled.

For the fixed blade, be careful not to allow any springs or ratcheting gears to pop out or shift during disassembly.

# RI-500 PARTS DIAGRAM



NO.	DESCRIPTION	CODE	QTY.
1	Handle Ass'y (1)	Z325A-01	1
2	Shoulder Screw	Z325A-02	1
3	Handle Ass'y (2)	Z325A-03	1
4	Handle Spring	Z325A-04	1
5	Pivot Pin	Z325A-05	1
6	Pawl	Z325A-06	1
7	4 X 13 Dowel Pin	Z325A-07	2
8	M5 X 10 Cap Hex Screw	Z325A-08	2
9	M4 X 6 Screw	Z325A-09	1
10	M6 U Nut	Z325A-10	1
11	Stationary Blade	Z325A-11	1
12	Moving Blade	Z325A-12	1
13	Pivot Screw	Z325A-13	1
14	Spring (A)	Z325A-14	1
15	Spring (B)	Z325A-15	1
16	Ratchet Pawl	Z325A-16	1

# WARRANTY INFORMATION

<b>SL-SERIES BATTERY OPERATED PRODUCTS</b>	<b>5 YEARS</b>
<b>REC-SERIES BATTERY OPERATED PRODUCTS</b>	<b>5 YEARS</b>
<b>IL-SERIES BATTERY OPERATED PRODUCTS</b>	<b>3 YEARS</b>
<b>ECO-SERIES BATTERY OPERATED PRODUCTS</b>	<b>1 YEAR</b>

---

## **BATTERIES**

48-11-1820, 48-11-1850 **3 YEARS**

---

## **CHARGERS**

48-59-1812, 48-59-1810 **3 YEARS**

---

The warranty does not cover any damages incurred from a Huskie tool including damages to property, bodily injuries and lost wages resulting from such injuries. This warranty solely covers the repair or replacement of tools supplied by Huskie. These remedies are exclusive, and the total liability of Huskie Tools, LLC whether based on contract, warranty, negligence, indemnification, strict liability or otherwise, shall not exceed the purchase price of the tool. In no event, shall Huskie Tools, LLC be liable for consequential, incidental or special damages.

**HUSKIE TOOLS, LLC MAKES NO OTHER WARRANTIES OF ANY KIND, EXPRESSED OR IMPLIED, AND ALL IMPLIED WARRANTIES INCLUDING ANY WARRANTY OF MERCHANTABILITY AND FITNESS FOR A PARTICULAR PURPOSE ARE DISCLAIMED.**

Huskie reserves the right to determine all warranty claims. Huskie will not warranty tools containing parts or batteries not originally supplied by Huskie. Failure due to misuse, improper maintenance, misapplication, not following instructions or warnings, abuse or repairs attempted by anyone other than Huskie Tools, LLC, or an authorized service center renders this warranty null and void.

## **REPAIR AND WARRANTY CLAIMS**

All claims must be sent to Huskie for inspection and authorization. A Return Goods Authorization (RGA) is required before shipping tools to Huskie. Secure the authorization by telephoning or writing to Huskie's main office with details of the claim. Non-warranty repairs are handled using the same procedure. Repairs exceeding 50 percent of the cost of a new tool will be advised before repairs are made.

# MAINTENANCE NOTES

# MAINTENANCE NOTES



**Huskie  
TOOLS®**

2105 W. CORPORATE DR STE B  
ADDISON, IL 60101-1470

PHONE 800-860-6170  
FAX 800-345-3767

[HUSKIETOOLS.COM](http://HUSKIETOOLS.COM)