

OPERATION MANUAL



PG-4



PRESSURE TEST GAUGE FOR 12 TON TOOLS

Read and understand all of the instructions and safety information in this manual before operating or servicing this tool.



2105 Corporate Dr STE B
Addison, IL 60101
Phone 800-860-6170
www.huskietools.com

THANK YOU...

for purchasing an Huskie Tools product. Our mission is to supply the finest steel cable connecting and cutting tools and cable-related products to the transmission and distribution markets. Huskie Tools products will represent state-of-the-art tools and be dependable and safe. All products will carry an unconditional guarantee to be free from defects and to perform as advertised.

Please take the time to read this manual carefully to learn how to correctly operate and maintain your tool.

Table of Contents

Registration/ Contents.....	2
Warranty.....	3
Safety.....	4
Specifications & Operations.....	5
Breakdown.....	6
Parts List.....	7

Warranty

Huskie Tools products carry a warranty that makes us a leader in the tool industry. No other manufacturer dares to back its tools as we do.

All Huskie REC-SERIES battery operated products carry a 5 year warranty. The ECO-SERIES battery operated products carry a 1 year warranty. The BP-80 & BP-84 batteries carry a 5 year warranty from the date stamped on the battery. The BP-82 battery carries a 1 year warranty.

PRODUCT WARRANTY

REC-Series battery operated products	5 Years
ECO-Series battery operated products	1 Years
Batteries (BP-80, BP-84)	5 years/ (BP-82) 1 year
Chargers (CH-90, CH-94)	5 Years

The warranty does not cover any damages incurred from a Huskie tool including damages to property, bodily injuries and lost wages resulting from such injuries. This warranty solely covers the repair or replacement of tools supplied by Huskie. These remedies are exclusive, and the total liability of Huskie Tools, LLC whether based on contract, warranty, negligence, indemnification, strict liability or otherwise, shall not exceed the purchase price of the tool. In no event shall Huskie Tools, LLC be liable for consequential, incidental or special damages.

HUSKIE TOOLS, LLC MAKES NO OTHER WARRANTIES OF ANY KIND, EXPRESSED OR IMPLIED, AND ALL IMPLIED WARRANTIES INCLUDING ANY WARRANTY OF MERCHANTABILITY AND FITNESS FOR A PARTICULAR PURPOSE ARE DISCLAIMED.

Huskie reserves the right to determine all warranty claims. Huskie will not warranty tools containing parts or batteries not originally supplied by Huskie. Failure due to misuse, improper maintenance, misapplication, not following instructions or warnings, abuse or repairs attempted by anyone other than Huskie Tools, LLC, or an authorized service center renders this warranty null and void.

Repair and Warranty Claims

All claims must be sent to Huskie for inspection and authorization. A Return Goods Authorization (RGA) is required before shipping tools to Huskie. Secure the authorization by telephoning or writing to Huskie's main office with details of the claim. Non-warranty repairs are handled using the same procedure. Repairs exceeding 50 percent of the cost of a new tool will be advised before repairs are made.

Payment Terms

Upon credit approval Huskie's standard payment terms are net-30 days. Visa, Mastercard, Discover and American Express are also accepted.

Freight

All Huskie tools are FOB, Glendale Heights, Illinois. Goods will be shipped pre-paid and added, unless otherwise specified. Freight shipments over \$17,000 are pre-paid.

Quotations

Special quantity quotations should be phoned in to discuss the scope of your tool requests.

Complete Support Services

Our customers have direct access to us for training, service, and problem solving. As specialists in tools, we maintain a trained repair staff and a large stock of parts. This contrasts with many tool suppliers who carry tools as a sideline without offering support services. Here are some reasons why our customers love to do business with us:

- Quick delivery
- We maintain inventory at our headquarters.
- Training and troubleshooting services.
- Fast repair service.
- Design and engineering service for special tool needs.



Safety Alert Symbol:

This safety alert symbol indicates a potential personal injury hazard; it is not used for messages related to property damage only.



Wear eye protection:

when operating this tool. Failure to wear eye protection could result in serious eye injury from flying debris.



Electric Shock hazard:

Use proper personal protective equipment when using this unit on or near energized electrical lines.

Pinch Point Hazard:

Compression Dies at high force can cause severe personal injury. Keep all body parts away from moving parts of the tool while operating.



PG-4

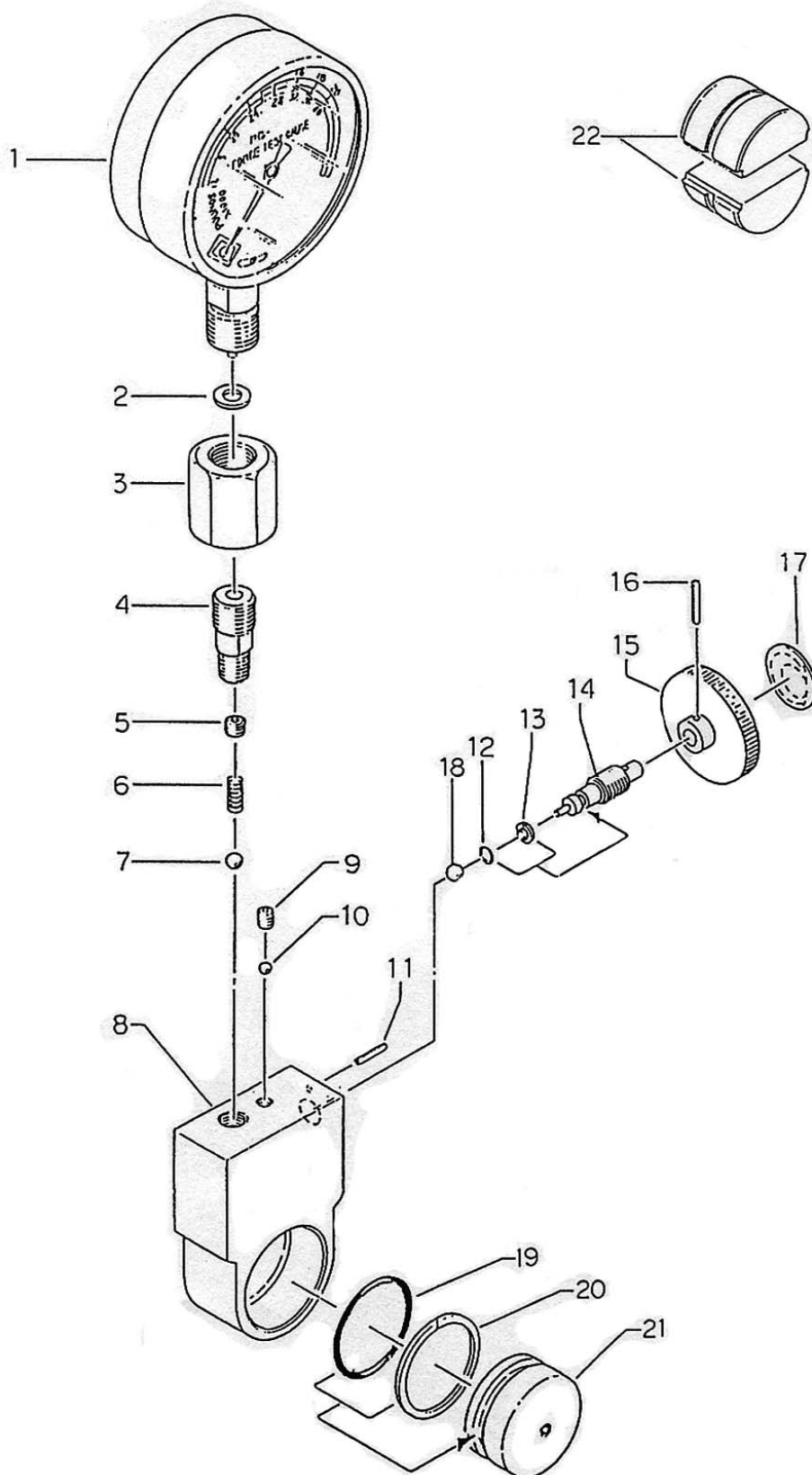
Specifications PG-4	
Description	12Ton Test Gauge Kit
Weight	3.5 lbs.
Dial Face	4"
Size	9 x 4" x 1.5"

The **PG-4** gauge is used to calibrate 12 ton output tools. It was designed to fit in all brands of 12 ton tools, and is supplied with U-type test dies. If you are using Kearney tools, specify PG-4K which comes with TDK-1 test dies.



OPERATING INSTRUCTIONS

1. Turn the release knob on the side of the gauge body to the hold position.
2. Insert the blank test dies supplied with the gauge kit into the compression tool to be tested.
3. Position the gauge in the tool jaws so the round end of the gauge contacts the back of the compression head, and is fully seated and centered between the tool jaws. It is important that the gauge is centered between the jaws to avoid damage caused by side loading.
4. Advance the ram on the compression tool until it contacts the gauge. Make sure that the gauge is still centered after contact. Then advance the tool under pressure until reaches the by-pass stage.
5. With the gauge in the hold position, the output reading will remain even after the tool pressure is released. Use caution when releasing the tool pressure as not to drop the gauge onto the floor or table top.
6. Turn the release knob back to the release position to relieve pressure in the gauge.



NO.	DESCRIPTION	CODE	QTY
1	PRESSURE GAUGE PG-4	PG4-01	1
2	COPPER GASKET (3)	RF-04	1
3	SWITCH ADAPTER	RB-03	1
4	SWITCH PLUG	RA-69	1
5	SCREW (13)	PG2-04	1
6	SPRING (102)	HR-18	1
7	1/4" BALL	26-22	1
8	CYLINDER	PG2-05	1
9	M6 X 6 SCREW (F.P.)	40U-14	1
10	3/16" BALL	16-49	1
11	2.5 X 14 DRIVE PIN	510-10	1
12	P-4 O-RING	410-48	1
13	P-4 BACK-UP RING (B.C.)	410-47	1
14	RELEASE SCREW	PG2-07	1
15	RELEASE KNOB	32-15	1
16	2.5 X 20 DRIVE PIN	32-13	1
17	LABEL	PG2-08	1
18	5/32" BALL	22-21	1
19	KS-25 O-RING	PG2-09	1
20	KS-25 BACK-UP RING (B.C.)	PG2-10	1
21	RAM	PG2-01	1
22	TEST DIES	PG2-02	1



2105 Corporate Dr STE B
Addison, IL 60101
Phone 800-860-6170

www.huskietools.com