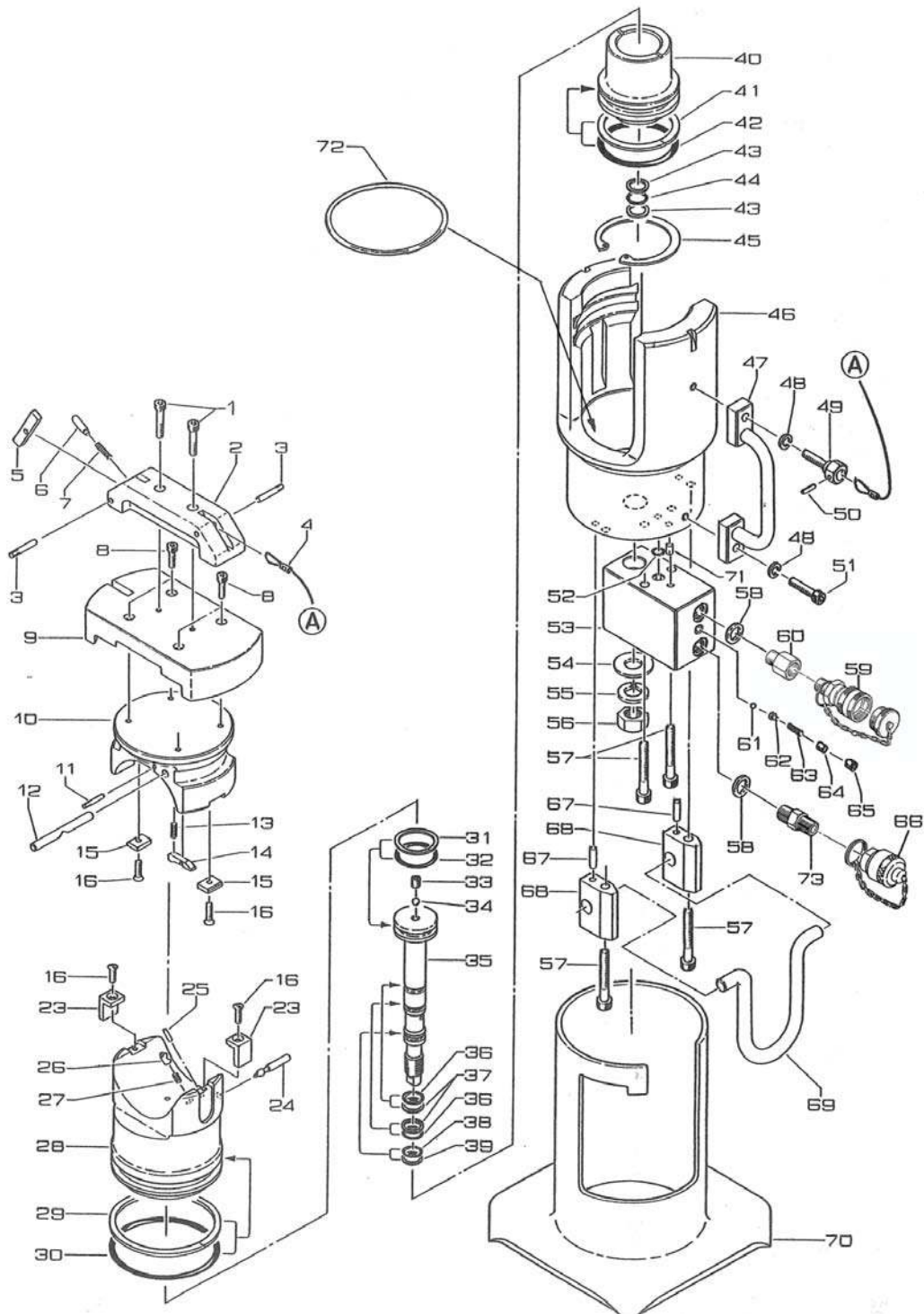




**Huskie  
TOOLS**

A SPARTACO COMPANY

# MODEL EP-60D2 Parts Diagram





**Huskie  
TOOLS**

A SPARTACO COMPANY

# MODEL EP-60D2

## Parts List

NO.	DESCRIPTION	CODE	QTY.
1	M5 X 30 SCREW	EG-64	2
2	HEAD CAP HANDLE	60-03	1
3	5 X 30 DOWELL PIN (G)	38A-03	2
4	WIRE (5)	60-04	1
5	TRIGGER	40U-02	1
6	PIN	40U-03	1
7	SPRING (186)	60-05	1
8	M5 X 20 SCREW	40U-01	4
9	CAP	40U-06	1
10	HOLDER RETAINER	40U-07	1
11	2.5 X 24 DOWELL PIN (G)	40U-08	1
12	PIN (88)	40U-09	1
13	SPRING (187)	40U-10	1
14	TOP DIE RETAINER	40U-11	1
15	RETAINER	40U-12	2
16	M5 X 6 SCREW	60-06	4
23	RAM GUIDE	40U-18	2
24	RETAINER PIN	60D-02	1
25	2.5 X 14 DRIVE PIN (BW)	410-11	1
26	DIE RELEASE PIN	60D-03	1
27	SPRING (177)	410-01	1
28	RAM	60D-04	1
29	P-90 BACK-UP RING (B.C.)	60-01	1
30	P-90 O-RING	60-02	1
31	P-34 BACK-UP RING (B.C.)	85-22	1
32	P-34 O-RING	85-23	1
33	RETAINING SCREW	601D-05	1
34	1/4" BALL	26-22	1
35	INNER PISTON	60D-06	1
36	P-16 O-RING	22-25	2
37	P-16 BACK-UP RING (B.C.)	22-24	2
38	P-15 O-RING	60D-07	1
39	P-15 BACK-UP RING (B.C.)	60D-08	1
40	INNER CYLINDER	60D-09	1

NO.	DESCRIPTION	CODE	QTY.
41	P-65 BACK-UP RING (B.C.)	520-10	1
42	P-65 O-RING	520-11	1
43	P-20 BACK	35-18	2
44	P-20 O-RING	410-34	1
45	JO-75 SNAP RING	60D-10	1
46	CYLINDER	60D-11	1
47	HANDLE	60-11	1
48	M8 LOCK WASHER	40-25	2
49	CABLE RETAINER	60-13	1
50	4 X 16 DRIVE PIN (AW)	60-12	1
51	M8 X 30 SCREW	40U-19	1
52	P-8 O-RING	85-34	1
53	OIL FEED BLOCK	60D-01	1
54	M16 FLAT WASHER	60D-12	1
55	M16 LOCK WASHER	60D-13	1
56	M16 HEX. NUT	60D-14	1
57	M8 X 60 SCREW	40U-29	4
58	COPPER GASKET (34)	610F-27	2
59	FEMALE COUPLER	FC-8/DP-8	1
60	ADAPTER	32D-12	1
61	1/8" BALL	40-20	1
62	SPRING HOLDER	610D-10	1
63	SPRING (305)	610D-09	1
64	ADJUSTING SCREW	610-08	1
65	PT 1/8" SCREW	RB-55	1
66	MALE COUPLER	MC-8/DC-8	1
67	PARALLEL PIN 6 X 12 M6	60-14	2
68	GRIP GUIDE BLOCK	60-15	2
69	GRIP	60-20	1
70	STAND	60D-15	1
71	4 X 14 DOWEL PIN (G)	4W-28	1
72	X-RING (345)	60-22	1
73	ADAPTER	32D-11	1