

OPERATION MANUAL



SP-100



SP-100: Hydraulic Operated Remote Cutting Head
Read and understand all of the instructions and safety information in this manual before operating or servicing this tool.



195 Internationale Blvd
Glendale Heights, IL 60139
Phone 800-860-6170
Fax 800-345-3767
www.spartacogroup.com

THANK YOU...

for purchasing a Huskie Tools product. Our mission is to supply the finest steel cable connecting and cutting tools and cable-related products to the transmission and distribution markets. Huskie Tools products represents the state-of-the-art tools and are dependable & safe. Trust, integrity, teamwork and mutual respect - these words are something we take to heart here at Huskie Tools.

Please take the time to read this manual carefully to learn how to correctly operate and maintain your tool.

Table of Contents

Registration/ Contents.....	2
Warranty.....	3
Safety.....	4
Specs/Kit Includes.....	5
Operating Instructions.....	6-7
Breakdown.....	8
Parts List.....	9

Warranty

Huskie Tools products carry a warranty that makes us a leader in the tool industry. No other manufacturer dares to back its tools as we do.

All Huskie REC-SERIES battery operated products carry a 5 year warranty. The ECO-SERIES battery operated products carry a 1 year warranty. The BP-80 & BP-84 batteries carry a 5 year warranty from the date stamped on the battery. The BP-82 battery carries a 1 year warranty.

PRODUCT WARRANTY

REC-Series battery operated products	5 Years
ECO-Series battery operated products	1 Years
Batteries (BP-80, BP-84)	5 years/ (BP-82) 1 year
Chargers (CH-90, CH-94)	5 Years

The warranty does not cover any damages incurred from a Huskie tool including damages to property, bodily injuries and lost wages resulting from such injuries. This warranty solely covers the repair or replacement of tools supplied by Huskie. These remedies are exclusive, and the total liability of Huskie Tools, LLC whether based on contract, warranty, negligence, indemnification, strict liability or otherwise, shall not exceed the purchase price of the tool. In no event shall Huskie Tools, LLC be liable for consequential, incidental or special damages.

HUSKIE TOOLS, LLC MAKES NO OTHER WARRANTIES OF ANY KIND, EXPRESSED OR IMPLIED, AND ALL IMPLIED WARRANTIES INCLUDING ANY WARRANTY OF MERCHANTABILITY AND FITNESS FOR A PARTICULAR PURPOSE ARE DISCLAIMED.

Huskie reserves the right to determine all warranty claims. Huskie will not warranty tools containing parts or batteries not originally supplied by Huskie. Failure due to misuse, improper maintenance, misapplication, not following instructions or warnings, abuse or repairs attempted by anyone other than Huskie Tools, LLC, or an authorized service center renders this warranty null and void.

Repair and Warranty Claims

All claims must be sent to Huskie for inspection and authorization. A Return Goods Authorization (RGA) is required before shipping tools to Huskie. Secure the authorization by telephoning or writing to Huskie's main office with details of the claim. Non-warranty repairs are handled using the same procedure. Repairs exceeding 50 percent of the cost of a new tool will be advised before repairs are made.

Payment Terms

Upon credit approval Huskie's standard payment terms are net-30 days. Visa, Mastercard, Discover and American Express are also accepted.

Freight

All Huskie tools are FOB, Glendale Heights, Illinois. Goods will be shipped pre-paid and added, unless otherwise specified. Freight shipments over \$17,000 are pre-paid.

Quotations

Special quantity quotations should be phoned in to discuss the scope of your tool requests.

Complete Support Services

Our customers have direct access to us for training, service, and problem solving. As specialists in tools, we maintain a trained repair staff and a large stock of parts. This contrasts with many tool suppliers who carry tools as a sideline without offering support services. Here are some reasons why our customers love to do business with us:

- Quick delivery
- We maintain inventory at our headquarters.
- Training and troubleshooting services.
- Fast repair service.
- Design and engineering service for special tool needs.



Safety Alert Symbol:

This safety alert symbol indicates a potential personal injury hazard; it is not used for messages related to property damage only.



Wear eye protection:

when operating this tool. Failure to wear eye protection could result in serious eye injury from flying debris.



Electric Shock hazard:

Use proper personal protective equipment when using this unit on or near energized electrical lines.

Pinch Point Hazard:

Compression Dies at high force can cause severe personal injury. Keep all body parts away from moving parts of the tool while operating.



SPECIFICATIONS & KIT INCLUDES

- 1 Cutter Head
- 1 Carrying Bag



Specifications	
Weight	29 lbs.
Length	24" L
Jaw Opening	4"
Capacities	
Wire Ropes	Do Not Cut
Soft Steel Bolts	Do Not Cut
Rebar, Ground & Anchor Rods	Do Not Cut
Cu & Al Wire	3-1/2"
ACSR	Do Not Cut
Standard Guy Wire	Do Not Cut
Chain	Do Not Cut
Comm. Cables	4"
Lead Sheath Cables	4"

The **SP-SERIES** remote head units connect to any 10,000 psi, high pressure, hydraulic pumping system. Choose from ten different models of cutters, to cut costs and efforts. A 3/8" screw-type male coupler is supplied with each tool. Huskie Tools remote cutters have a hinged head which can be opened for easy cable or bar insertion. The movable blade advances in a shear fashion, to cut the material cleanly. When the cutting pressure is relieved an internal ram spring retracts the blade. The guillotine cutting style was chosen over scissor type cutting because of its powerful output force, larger cable capacities, compact size and reliability.

All tools can be used under water, consult factory for specific applications.

NOTE: FOR EHS GUY WIRE SPECIFY S-24CC, S-32CC OR THE REMOTE HEAD SP-24CC.

Cutting

1. Before cutting, make sure the material being cut is within the proper cutting capacity of the tool being used.
2. Before connecting the tool head, make sure the pump and hose being used is working properly, and adjusted to and rated at 10,000 psi. The use of a pump or hose that is not rated for 10,000 psi working pressure may cause severe tool damage and result in personal injury.
3. Connect the tool head to the pump or hose, making sure all coupler connections are secure. It is important that all connections are tight for tool to function properly.
4. Open cutter head by lifting latch or removing lock pin. Depending on the model being used.
5. Insert material between cutter head and blade and secure latch. It is important that you check the latch for proper engagement before continuing with the cut. **Failure to secure the latch can result in severe tool damage and personal injury.**
6. Align the material at a 90 degree angle to the blade. This will ensure a proper cut with minimal distortion. If the material is cut at any other angle, severe blade damage may occur. Refer to diagram on page two for proper alignment.
7. Proceed by operating pump to advance blade. If the pump has a hold feature, it is important to check for proper alignment of material and blade before cutting. Continue to operate pump and cut material.
8. Once the cut is made stop the pump and release pressure to retract the blade. It is not necessary to advance the tool any further after the cut has been completed. If the tool blade hangs up, be sure to check if coupler connections are tight, release mechanism on pump is functioning properly, or refer to page three "troubleshooting" to release blade.
9. Always wear eye protection and any other specified safety equipment when cutting. Be sure surrounding area is clear, as hardened metals may fly apart when severed.
10. For EHS guy wire or bridge strand, use models SP-24CC, S-24CC or S-32CC only! The use of any other SP-series cutter will result in severe blade damage and may cause personal injury.
11. Models SP-85 and SP-100 are designed for use on non-ferrous metals only! Do not cut steel or severe tool damage and personal injury may occur.

MAINTENANCE AND INSPECTION

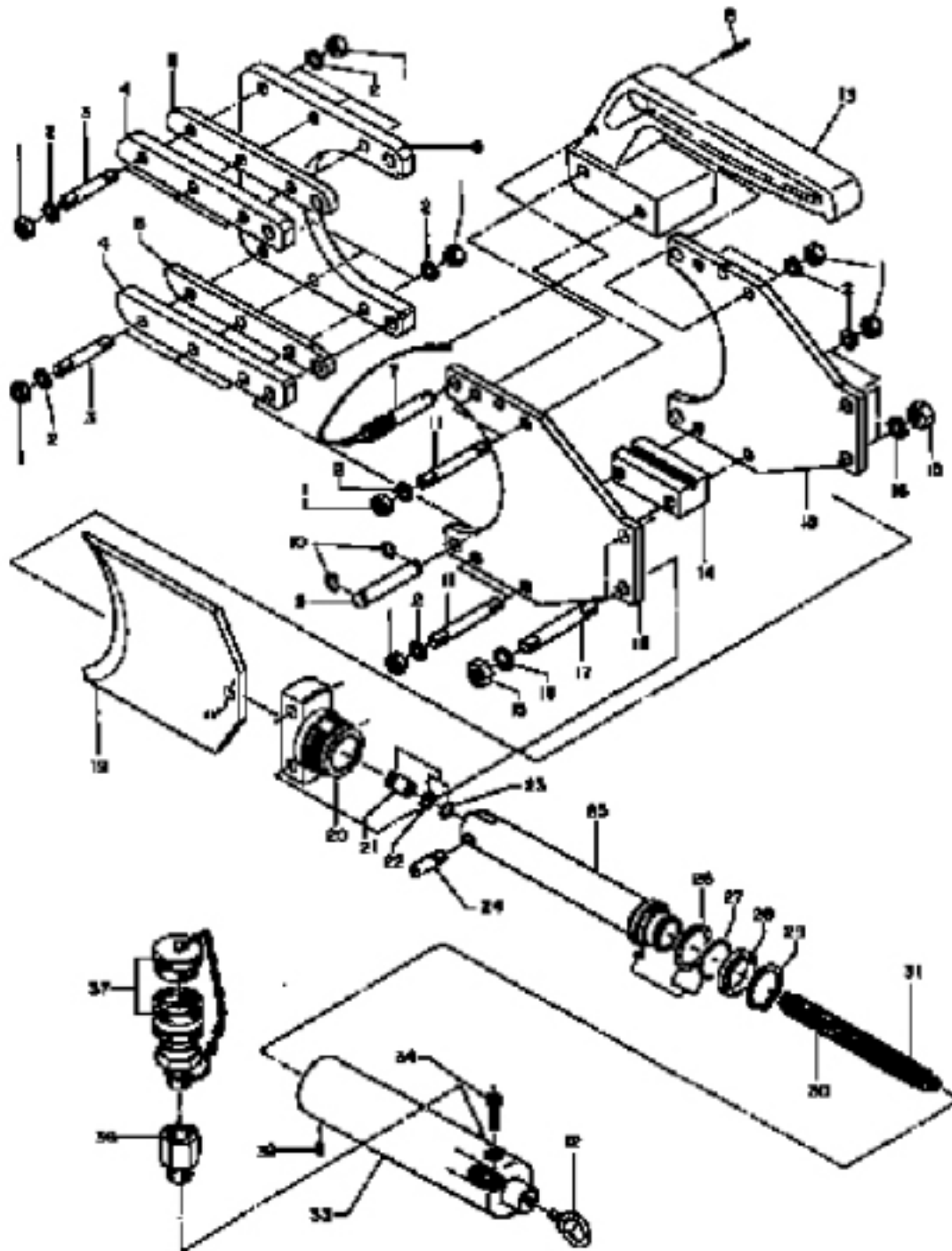
1. Daily maintenance is required to ensure that the tool is kept in good working condition.
2. Do not store the tool in a humid environment.
3. Wipe away any excess oil with a soapy cloth.
4. Provided that maintenance of the tool is carried out regularly, the tool should provide many years of service.
5. Should you experience any difficulty with the operation and maintenance of this tool, contact Huskie's technical support department at 1-800-860-6170.

PRECAUTION FOR THE TOOL

1. Always point the tool **AWAY** from other people.
2. If the tool is stored for an extended period at a temperature of less than 25° F (-5°C), the tool should be allowed to return to room temperature to ensure smooth operation. Use the tool only after it has been at room temperature for 1 hour.
3. Do not drop the tool. Dropping the tool may damage the hydraulic circuit and result in the tool not functioning correctly.
4. Keep the head and ram clean and free of debris. Solvents can be used to clean the head, but should not be used on the plastic body. Use soap and water to clean the body.
5. Do not use tool for continuous use. If any sign of over heating, allow the tool to cool for 15 mins.
6. Do not allow tool to be submerged in water. The tool may be used in damp or wet environments. However it is recommended for tool to be air-dried before use.

TROUBLESHOOTING FOR THE TOOL

1. Never attempt to adjust pressure setting without the use of the proper test gauge. Consult factory for proper adjusting procedure.
2. All manually operated hydraulic compression tools are equipped with our external replaceable bypass cartridge. These cartridges should not have to be replaced for 10,000 to 12,000 compressions.
3. Die hang up is common with all types of compression tools. Should this occur, the jaws can easily be separated by holding the pump handle in the release position while prying the jaws apart. Never attempt to hit connector or tool jaw with hammer as this will damage connector and tool.
4. If tool fails to advance upon receipt or after an extended period of storage, invert tool and rap compression head sharply on ground. The suction valve check ball can become stuck after extended storage or during shipment, not allowing the tool to advance.
5. Always clean tool after use to keep ram track clear of dirt and debris.



NO.	DESCRIPTION	CODE	QTY.
1	M10 Hex. Nut	40-31	20
2	M10 Lock Washer	40-32	20
3	Stud Bolt (11)	100-01	6
4	Head Shear Plate	100-02	2
5	Spacer	100-03	2
6	Head Shear	100-04	1
7	Lock Pin	55E-01	1
8	3 X 20 Drive Pin	P55-06	1
9	Pin (48)	55-08	1
10	CE-12 Snap Ring	55-09	2
11	Stud Bolt (8)	55-10	4
12	M8 Lifting Bolt	100-05	1
13	Carrying Handle	P100A-01	1
14	Guide Piece (B)	P100A-02	1
15	M12 Hex. Nut	55-14	4
16	M12 Lock Washer	40-09	4
17	Stud Bolt (15)	55-15	2
18	Support Plate	100A-02	2
19	Blade	100-10	1
20	Cylinder Head	100-11	1
21	Spring Anchor Stub	100-12	1
22	P-10 Back-Up Ring (B.C.)	100-13	1
23	P-10 O-Ring	100-14	1
24	Blade Screw	100-16	1
25	Ram	100-18	1
26	P-34 Back-Up Ring (B.C.)	85-22	1
27	P-34 O-Ring	85-23	1
28	Flange	100A-03	1
29	G-30 Snap Ring	100A-04	1
30	Spring Anchor Screw (A)	100-19	1
31	Spring (230)	100A-05	1
32	M6 X 6 Screw (C.P.)	85-41	1
33	Cylinder	100A-06	1
34	M8 x 25 Screw	100-23	1
35	Female Coupler IZUMI	100-24	1
36	Adapter 3/8" PT-M. 3/8" NPT-F.	P85-80	1
37	Female Coupler P.H. Type	P85-81	1



NOTES



NOTES



195 Internationale Blvd
Glendale Heights, IL 60139
Phone 800-860-6170
Fax 800-345-3767
www.spartacogroup.com