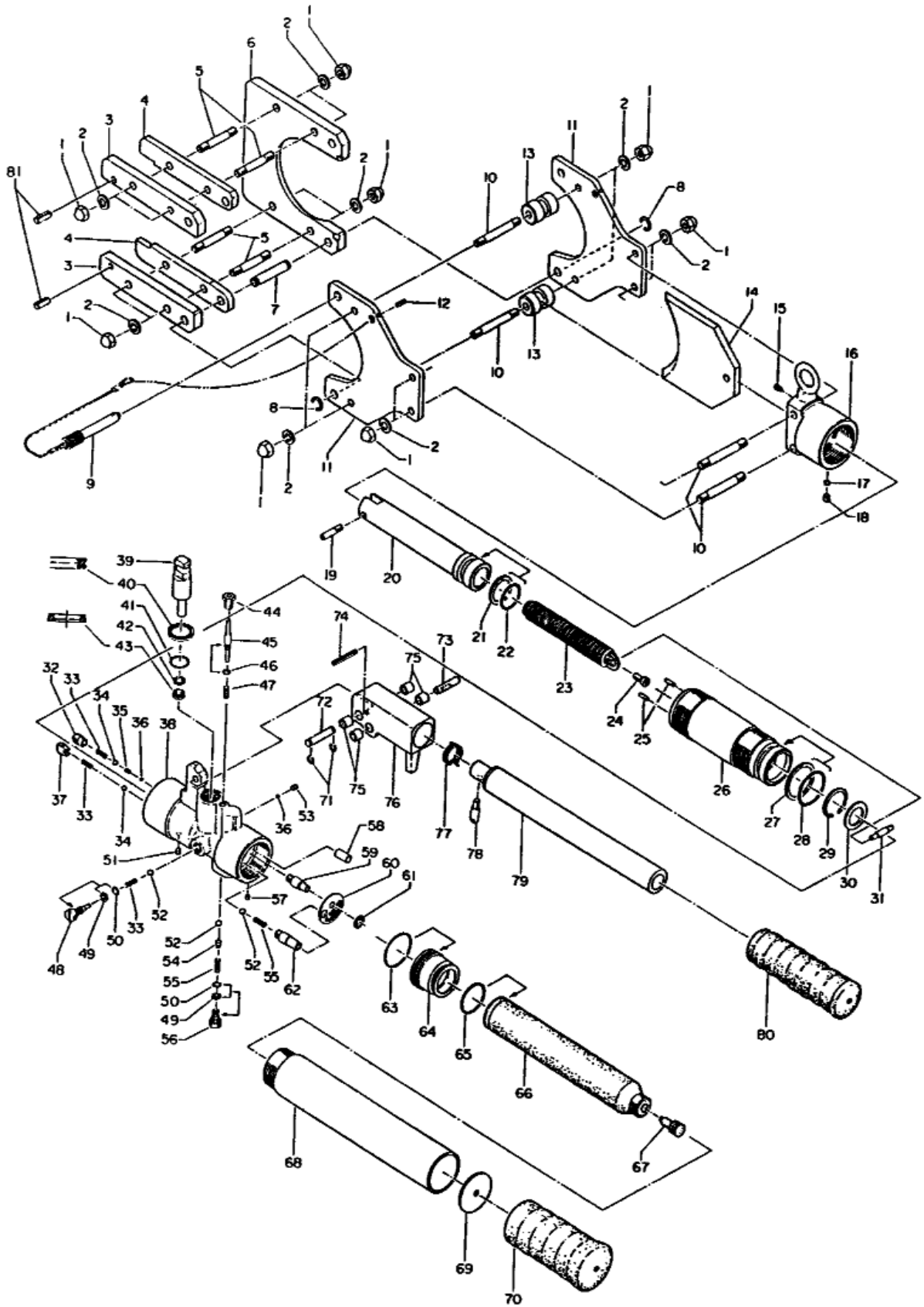


MODEL S-85 PARTS DIAGRAM



MODEL S-85 PARTS LIST

NO.	DESCRIPTION	CODE	QTY.
1	M8 Cap Nut	85-01	16
2	M8 Lock Washer	40-25	16
3	Head Shear Plate	85-02	2
4	Spacer	85-03	2
5	Stud Bolt (3)	85-04	4
6	Head Shear	85-05	1
7	Pin (44)	85-06	1
8	CE-9 Snap Ring	75-05	2
9	Lock Pin Ass'y	85-07	1
10	Stud Bolt (4)	85-09	4
11	Support Plate	85-10	2
12	2 x 12 Drive Pin	40-21	2
13	Roller	85-11	2
14	Blade	85-12	1
15	M5 x 6 Screw (D.P.)	85A-01	1
16	Cylinder Head (N.S.)	85A-02	1
17	Stopper Collar	85A-03	1
18	M5 x 5 Screw (F.P.)	85A-04	1
19	Blade Screw	85-14	1
20	Ram	85-15	1
21	P-24 Back-up Ring (B.C.)	85-16	1
22	P-24 O-Ring	85-17	1
23	Spring (147)	85-18	1
24	Spring Anchor Screw	85-19	1
25	2.5 x 10 Dowel Pin (D)	40A-03	2
26	Cylinder (N.S.)	85A-05	1
27	P-34 Back-Up Ring (B.C.)	85-22	1
28	P-34 O-Ring	85-23	1
29	JO-30 Snap Ring	85-24	1
30	Retainer Washer	85-25	1
31	Spring Anchor Pin	85-26	1
32	Valve Screw (2)	85A-06	1
33	Spring (4)	16-48	3
34	3/16" Ball	16-49	2
35	Spring (164)	85A-07	1
36	1/8" Vall	40-20	3
37	Valve Screw (2)	85A-08	1
38	Body	85A-09	1
39	Pump Piston	85-30	1
40	P-18 X-Ring	85-31	1
41	P-18 O-Ring (C.P.)	85-32	1
42	P-8 Back-Up Ring (B.C.)	85-33	1
43	PS-8 Pent Seal	16-44	1
44	Release Valve Screw (7)	85-35	1
45	Release Valve Stem	410-35	1
46	P-3 O-Ring	16-36	1
47	Spring (144)	85-37	1
48	Suction Valve Plug	410-46	1

NO.	DESCRIPTION	CODE	QTY.
49	P-4 Back-Up Ring (B.C.)	410-47	2
50	P-4 O-Ring	410-48	2
51	M6 x 6 Screw (C.P.)	85-41	1
52	7/32" Ball	16-26	3
53	M4 x 4 Screw (F.P.)	85-47	1
54	Spring Holder	410-51	1
55	Spring (43)	85-49	1
56	Valve Plug (1)	410-52	1
57	M4 x 5 Screw (C.P.)	55A-24	1
58	Suction Tube	85A-10	1
59	Exhaust Tube (2)	85A-11	1
60	Filter Ass'y	85A-12	1
61	SE-6 Snap Ring	85A-13	1
62	Exhaust Tube (3)	85A-14	1
63	S-36 O-Ring	85-51	1
64	Body Extension	85-22	1
65	P-26 O-Ring	16-55	1
66	Oil Reservoir	40A-07	1
67	Reservoir Cap	410-55	1
68	Body Handle (N.S.)	85A-15	1
69	Grip Base	40-56	1
70	Body Handle Grip	40-57	1
71	CE-7 Snap Ring	40-49	2
72	Pin (35)	85-55	1
73	Pin (36)	85-56	1
74	5 x 30 Dowel Pin (G)	38A-03	1
75	Bushing	85-58	4
76	Pump Handle Head	85-59	1
77	Spring (146)	85-60	1
78	Push Pin	85-61	1
79	Pump Handle	85A-16	1
80	Pump Handle Grip (2)	410-31	1
81	5 x 18 Drive Pin	P85-06	2