

HUSKIE TOOLS, INC.



**Operating Instruction Manual
For REC-S3550 Battery Powered
Cutting Tool With Parts List**

REC-S3550 SPECIFICATIONS

CUTTING TOOL (REC-S3550)

Output: 13 ton
Weight: 23 lbs. w/ battery
Size: 21.5"L x 10.5"H x 3.5"W
Jaw Opening: 2"
Capacities: Wire Rope 1"
Soft Steel Bolts 1-1/4"
Rebar, Ground Rod 3/4"
Cu & Al wire 2"
ACSR 2156 MCM
Standard Guy Wire 3/4"

BATTERY POWERED CUTTER 2" JAW OPENING

- Cuts ACSR up to 2156 MCM
- Rapid Advance
- The most Powerful Battery Operated Cutter
- Overload By-Pass Protection
- 2" Jaw Opening

BATTERY CARTRIDGE (BP-70E)

Battery type: Sealed nickel cadmium
Voltage: 14.4V DC
Rated current: 2.0 Ah
Charge time: 25 min.
Dimensions: 3.5"L x 2.7"W x 5.3"H
Weight: 1.6 lbs.

BATTERY CHARGER (CH-35R)

Input voltage: 120V AC single phase
Charging Capacity: 20VA
Dimensions: 7.5"L x 4.5"W x 3.7"H
Weight: 2 lbs.

STANDARD ACCESSORIES

Battery Cartridge: BP-70E
Battery Charger: CH-35R
Carrying Case: REC-3000CASE
Shoulder Strap: ROB-S01

OPTIONAL ACCESSORIES

Battery Cartridge: BP-70EI
BP-70MH
DC Charger: CH-70DCH

STANDARD ACCESSORIES

**BATTERY CARTRIDGE
BP-70E**



**BATTERY CHARGER
CH-35R**



**CARRYING CASE
REC-3000CASE**



**SHOULDER STRAP
ROB-S01**



OPTIONAL ACCESSORIES

**BATTERY CARTRIDGE
BP-70EI**



**BATTERY CARTRIDGE
BP-70MH**



**DC CHARGER
CH-70DCH**



IMPORTANT OPERATING PRECAUTIONS

PRECAUTIONS FOR THE TOOL:

1. Do not short circuit the contacts or expose the cartridge to water, oil or solvents.
2. Do not disassemble or attempt to repair the battery cartridge or dispose of in a fire.
3. Do not drop or otherwise abuse the battery cartridge.
4. Do not leave the cartridge in locations where it will be exposed to a temperature greater than 140°F (60°C) for an extended period.
5. The battery has a limited life. When the crimping capacity becomes about 1/2 that of the original capacity, the battery should be replaced.
6. If the battery cartridge is stored without being charged, natural drainage will cause the power to be reduced. The battery should be charged every 3 months if not in use.

PRECAUTIONS FOR THE BATTERY CARTRIDGE:

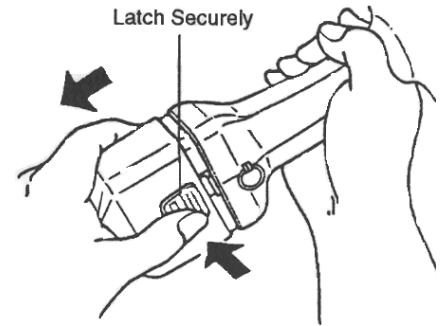
1. Do not short circuit the contacts or expose the cartridge to water, oil or solvents.
2. Do not disassemble or attempt to repair the battery cartridge or dispose of in a fire.
3. Do not drop or otherwise abuse the battery cartridge.
4. Do not leave the cartridge in locations where it will be exposed to a temperature greater than 140°F (60°C) for an extended period.
5. The battery has a limited life. When the crimping capacity becomes about 1/2 that of the original capacity, the battery should be replaced.
6. If the battery cartridge is stored without being charged, natural drainage will cause the power to be reduced. The battery should be charged every 3 months if not in use.

PRECAUTIONS FOR THE CHARGER:

1. The LED indicator lights up green and remains lit when the unit starts charging a battery cartridge. The indicator turns orange when charging is completed.
2. This unit is for charging battery cartridges BP-70E, BP-70EI, BP-70R, BP-70I and BP-70MH only. Do not use the charger for any other devices.
3. Allow battery cartridges to cool before charging. Allow at least 15 minutes between charges when charging several cartridges in succession.
4. Charge batteries at an ambient temperature of 50°-95°F (10°-35° C). Charging time is approximately 25 minutes for the BP-70E and BP-70EI, 15 minutes for the BP-70R and BP-70I, and 35 minutes for the BP-70MH.
5. Never short circuit the output terminals.
6. Do not expose the charger to water, oil or solvents.
7. Do not disassemble, attempt to modify, drop or otherwise abuse charger.

OPERATING INSTRUCTIONS

1. Insert the plug end into a 120V power source. The LED indicator will flash red indicating the charger is now in “stand-by” mode and ready to charge the battery. Do not plug the charger into a generator as this will likely cause the fuse in the charger to short, and will not operate.
2. To charge a drained battery, insert the battery into the charger until the LED indicator shows a steady green. This indicates the battery is being charged and will be completed in approximately 25 minutes. The LED indicator will show orange when charging is completed.
3. If the indicator shows a steady red when the battery is inserted, the battery is too hot to be charged and must be cooled to room temperature before charging. Do not leave the battery in the charger to cool as the charger will not recognize the battery is inserted and will not charge.
4. If the LED indicator goes out or is flashing quick red, this could be a possible short in the battery circuit, or a problem with the charger itself. It is best to consult the factory at 1-800-860-6170 for service if such a condition occurs.
5. To recondition the battery, insert the battery into the charger and push the “R” button. The LED indicator should be flashing green to indicate the discharge cycle is now in progress.
6. For technical questions or difficulty in operation, please call our customer service department at 1-800-860-6170.



ATTACHING THE BATTERY CARTRIDGE:

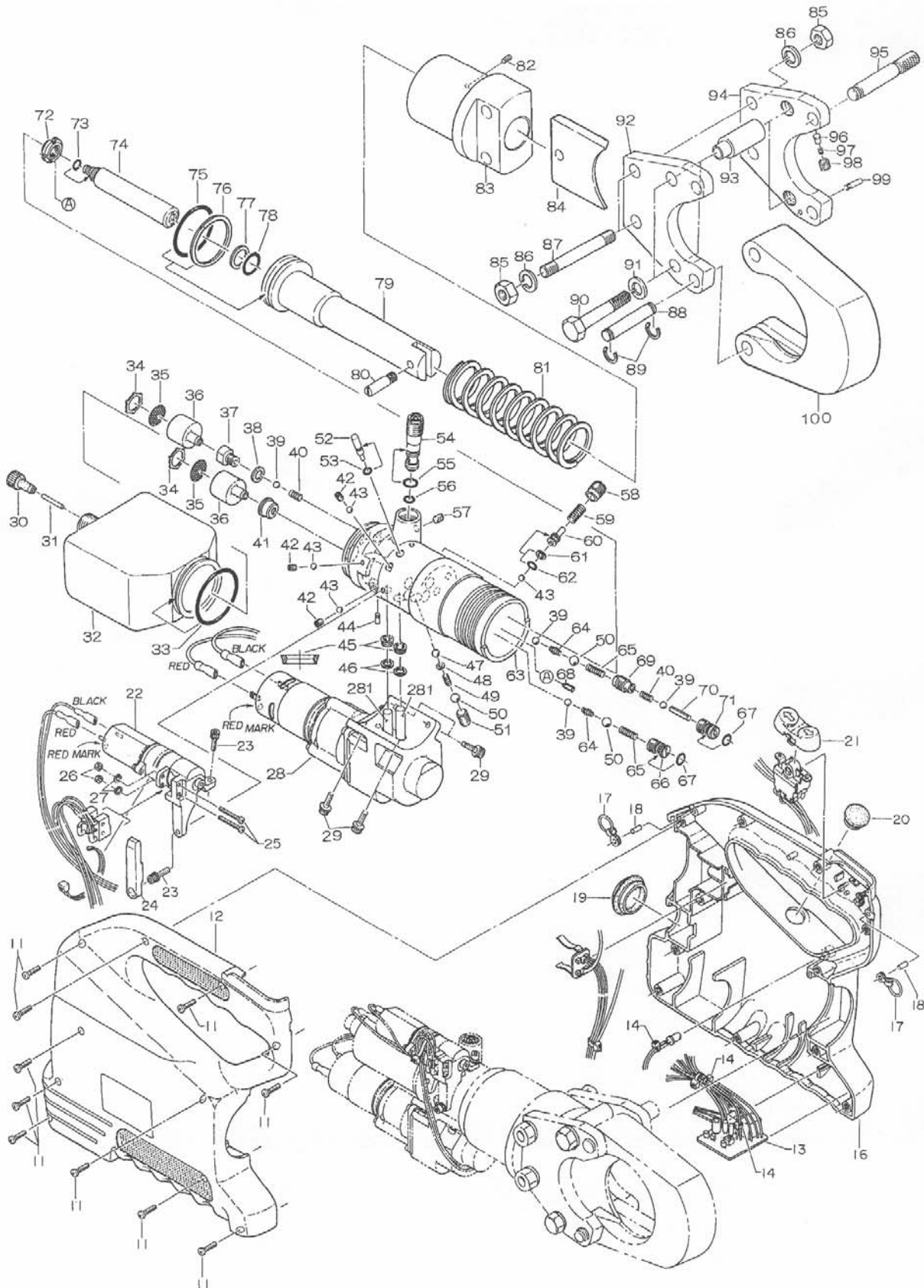
1. While pressing the latch, pull out the battery cartridge. To replace the battery cartridge, push the new cartridge firmly into place.
2. After inserting a battery cartridge, check that it is securely in place by pulling gently. Do not press the latch when pulling the cartridge.

OPERATING INSTRUCTIONS

CUTTING:

1. Retract blade by pressing the release button.
2. Make sure that material being cut is within the specified cutting capacity of the tool.
3. Insert material between cutter head and blade and secure latch. It is important that you check the latch for proper engagement before continuing with the cut. Failure to secure the latch can result in severe tool damage and personal injury.
4. check material for proper alignment to the cutting blades. It should be at a 90° degree angle to the blades. Any other angle will cause the blades to spread apart and possibly break.
5. Continue to advance the blade until the material is cut. If material is cut and tool has not yet bypassed, it may be difficult to retract blades. If this occurs, continue to advance tool and build pressure. A series of clicks will be heard while the tool is building pressure, followed by the tool running in a “neutral” mode. This indicates that the tool has built full pressure and bypassed and can now be released.

MODEL REC-S3550 PARTS DIAGRAM



TROUBLESHOOTING GUIDE

PROBLEM	CAUSE	SOLUTION
MOTOR RUNS, BUT THE TOOL JAWS WILL NOT ADVANCE	Insufficient Hydraulic Oil	Consult Factory for Repair Service
	Air Block in Hydraulic System	Invert tool to allow air to rise towards the top of the oil bladder
	Defective Hydraulic Circuit	Consult Factory for Repair Service
MOTOR RUNS, TOOL JAWS ADVANCE BUT WILL NOT BUILD PRESSURE	Insufficient Hydraulic Oil	Consult Factory for Repair Service
	Defective Suction Valve or Bypass Cartridge	Consult Factory for Repair Service
MOTOR WILL NOT RUN AT ALL	Defective Battery	Charge or Replace Battery
	Bad Contact or Loose Battery Connections	Check all Connections and Wires
	Misaligned Switch	Check to Make Sure that Switch is Properly Aligned with Trigger
		Consult Factory for Repair Service
TOOL JAWS WILL NOT RELEASE	Tool Did Not Complete a Full Cycle and Bypass	Press Trigger and allow Tool to Bypass. Then Release Tool Jaws.
	Connector is Jammed in Tool Jaws	Press and Hold Release Trigger While Prying Tool Jaws Apart.
	Release Trigger is Bent or Misaligned	Consult Factory for Repair Service

MODEL REC-S3550 WARRANTY

All Huskie REC-Series battery driven products carry a 5 year warranty, and the ECO-Series carry a 3 year warranty. The BP-70E, BP-70EI, and the BP-70MH batteries carry a 5 year warranty from the date stamped on the battery. The LED indicator on the BP-70-EI battery carries a 1 year warranty from purchase date. Hydraulic hammers carry a one year warranty and all other Huskie products carry a 5 year warranty. Huskie reserves the right to determine all warranty claims. Failure due to misuse, abuse or repairs attempted by anyone other than Huskie Tools, Inc., or an authorized service center render this warranty null and void. Our patented drop-out bypass cartridge can be re-calibrated or tested at no charge for the life of the tool. All factory repaired or reconditioned hydraulic tools carry a one year warranty on parts and labor.

REPAIR AND WARRANTY CLAIMS

All claims must be sent to Huskie for inspection and authorization. A Return Goods Authorization is required before shipping tools to Huskie. Secure the authorization by telephoning 1-800-860-6170 or writing to Huskie's main office with details of claim. Non-warranty repairs are handled using the same procedure. Repairs exceeding 50% of the cost of a new tool will be advised before repairs are made.

PLEASE RETAIN FOR YOUR RECORDS

Purchaser's Name

Address

City, State, Zip

Tool Model Number

Serial Number

Date Purchased From

Purchased From

MODEL REC-S3550 WARRANTY

HOW TO GET SERVICE UNDER THE TERMS OF THE LIMITED WARRANTY

Return your product directly to Huskie Tools, Inc. as our representative network is not prepared to service the product under the terms of this warranty.

1. Write, call or fax Huskie stating the tool's purchase date and problem. You will be given a RGA # to assure that your merchandise will be properly handled upon its receipt.
2. CAUTION: Make sure the product is packaged adequately so as to prevent damage or loss during transit. The shipment must be prepaid and we recommend that it be insured. A cover letter indicating the reason for the return should be included in order to facilitate repairs.

**SEND THIS PORTION WITH ANY TOOL WHEN REQUESTING REPAIRS,
WARRANTY OR RECONDITIONING WORK.**

PLEASE CALL OR FAX HUSKIE FOR AN RGA#

Customer Job No. _____

Address _____

City _____ **State** _____ **Zip** _____

Tool Model _____

Warranty Claim _____ **Repair Only** _____

Customer Name: _____

Phone (_____) _____

City _____ **State** _____ **Zip** _____

Serial No. _____

Estimate Required: Yes _____ **No** _____



198 N. Brandon Drive
Glendale Heights, Illinois 60139
(630) 893-7755 Fax (800) 345-3767
Toll Free 1-800-860-6170
<http://www.huskiertools.com>
info@huskiertools.com