

HUSKIE TOOLS, INC.



**Operating Instruction Manual
For R-14EA Pump
With Parts List**

GENERAL INFORMATION AND TROUBLESHOOTING

1. All electrical pumps are designed to operate on 110 Volt AC. All are 2 stage rapid advance. See individual pump specifications for flow ratings.
2. The smaller units are rated intermittent use because of their portability and light weight design. For heavy duty application, the R14EA or R14EAD, 3/4 HP models are recommended.
3. Hoses over 50 feet in length can be used but with sacrifice of oil speed flow. Hose lengths of 25' or less are ideal.
4. The R14EA is a larger remotely controlled automatic pump with a few more features than the R14EF unit. This unit has an auto mode which when activated runs the unit up to pressure and automatically releases the pressure when 10,000 psi or predetermined pressure is reached and the oil is dumped back into the oil reservoir. This pump is used for production cutting or compressing applications where portability is not a factor.
5. When attaching hoses, please be sure all couplers are securely fastened. 90% of our problems arise out of a loose coupler connection. If the unit fails to pump or retract, the problem usually lies with the couplers.
6. Always keep couplers clean by wiping oil and debris from surfaces before connecting hoses to pump or tool.
7. Never move pump by pulling on the electrical cords.
8. Occasionally check the fluid level of the pump. See individual pump operating instructions for proper oil level. When adding fluid, always use EP-32X or equivalent hydraulic fluid.
9. Always open the air breather vent cap on the oil filler port before operating the tool. This will eliminate the problem of a vacuum situation when the oil is pumped from the tank. Always close the air vent when storing to eliminate the problem of oil leakage if the unit is turned over.
10. In the event the unit does not pump, there may be an air blockage in the suction tube which can be eliminated by turning the pump on its side a few times to allow the air bubble to escape from the tube.
11. Pressure setting is preset at 10,000 psi but can be changed to lower settings if desired. An in-line gauge (Huskie PG-1) should be used periodically to determine your required operating pressure. Consult factory for proper adjusting procedure.

OPERATING INSTRUCTIONS FOR R-14EA

1. Connect all couplers on tool, hose and pump. Make sure all couplers are secure before operating.
2. Set the control switch located on the front panel of the pump to “Hand” position.
3. Unscrew dust cap of the receptacle located front panel of the pump. Then insert the plug of remote control switch tightly and screw the ring onto receptacle thread.
4. Connect power cable to the pump in the same manner as described in number 3 and supply power (110 Volt AC).
5. Unscrew Air breather located on the back side of reservoir, counter-clockwise before operation. Tighten for storage.
6. To check the release solenoid, depress the “Down” button on the remote control switch. An audible “click” will be heard.
7. **Hand Operation**
 - 7-1 By pressing “UP” button, motor will begin to run, generating oil flow and tool will advance.
 - 7-2 To stop motor (and pump) release “UP” button. Oil pressure will remain constant until “DOWN” button is depressed to relieve pressure. To continue the increase in oil pressure, depress “UP” button.
 - 7-3 By pressing “UP” button and holding, pump will generate a maximum pressure of 10,000 psi. At that point, an automatic pressure switch will activate and further pressure cannot be generated. The pump will automatically shut off when pressure setting is reached. An in-line gauge (Huskie PG-1) can be used to determine output pressure. The pressure is factory set at 10,000.
 - 7-4 To relieve oil pressure, depress the “DOWN” button and hold. Oil in tool cylinder will return to tank and the tool will be ready to begin the next cycle.
8. **Auto Operation**
 - 8-1 Set the control switch located on the front panel of the pump to “AUTO” position. An audible “click” will be heard, indicating release solenoid is activated.

(continued on next page)

OPERATING INSTRUCTIONS FOR R-14EA

- 8-2 Before operating the pump in AUTO, check if the material to be compressed, punched, cut, bent, etc., is in position. Then press "UP" button. Once motor starts, oil pressure increases up to 10,000 psi, then pressure is released by the solenoid automatically. Pressing the "UP" button may be released right after motor starts. **PLEASE NOTE MOTOR CAN NOT BE STOPPED AND HELD IN A HALFWAY CYCLE WHEN AUTO OPERATED.** It can be overridden by depressing the "DOWN" button at any time. Practice this procedure before starting your job.
- 8-3 Occasionally check oil level through the visual oil port just below the vent. Oil level should be on or just above the red dot in the center of the window. If oil needs to be added, remove the vent from the reservoir and fill to proper level.

SPECIFICATIONS

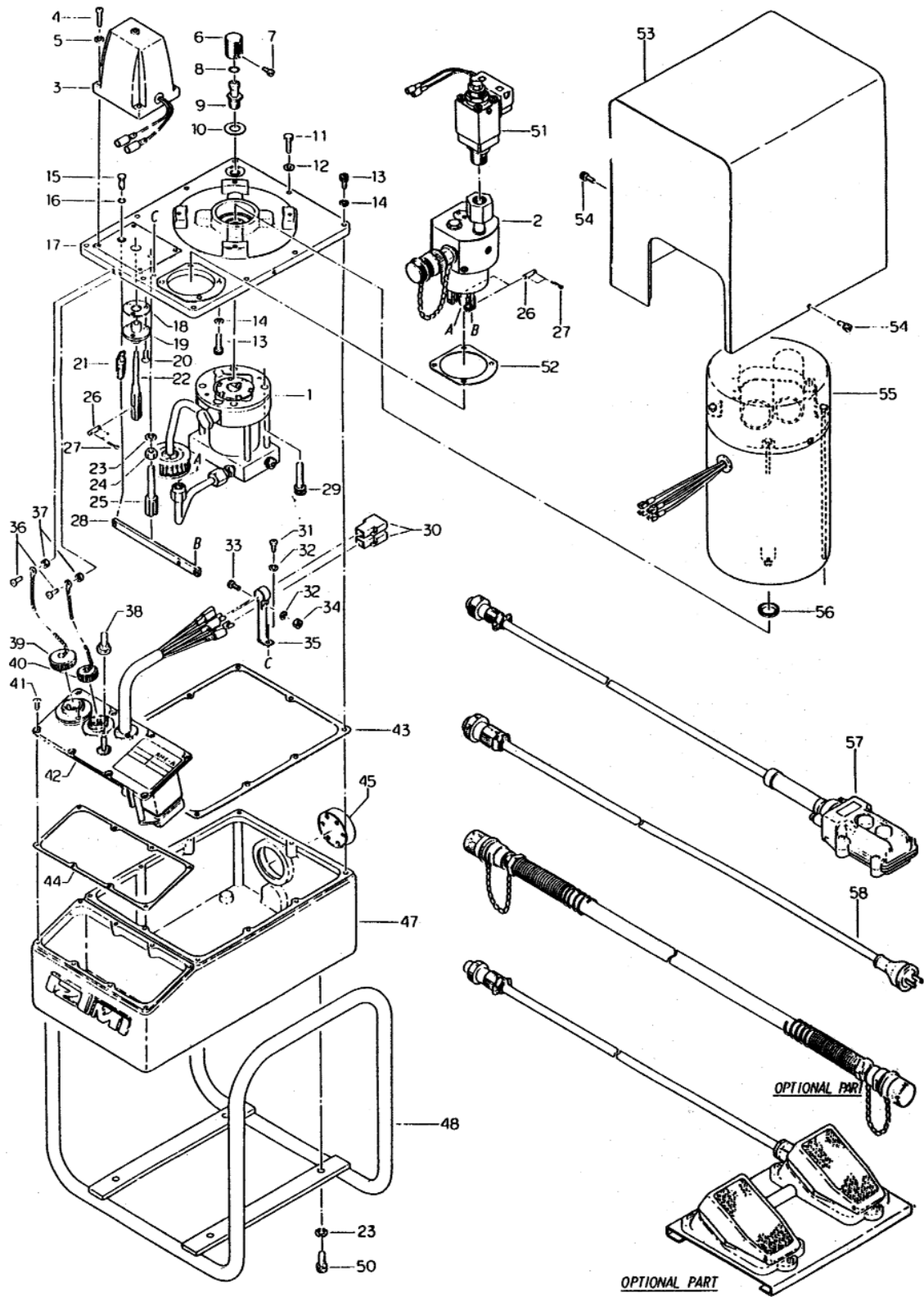
MOTOR

Type	Condensed starter
R.P.M.	1440/1750
Voltage	Frequency
Current.....	8.2 Amp
Horse Power	3/4

PUMP

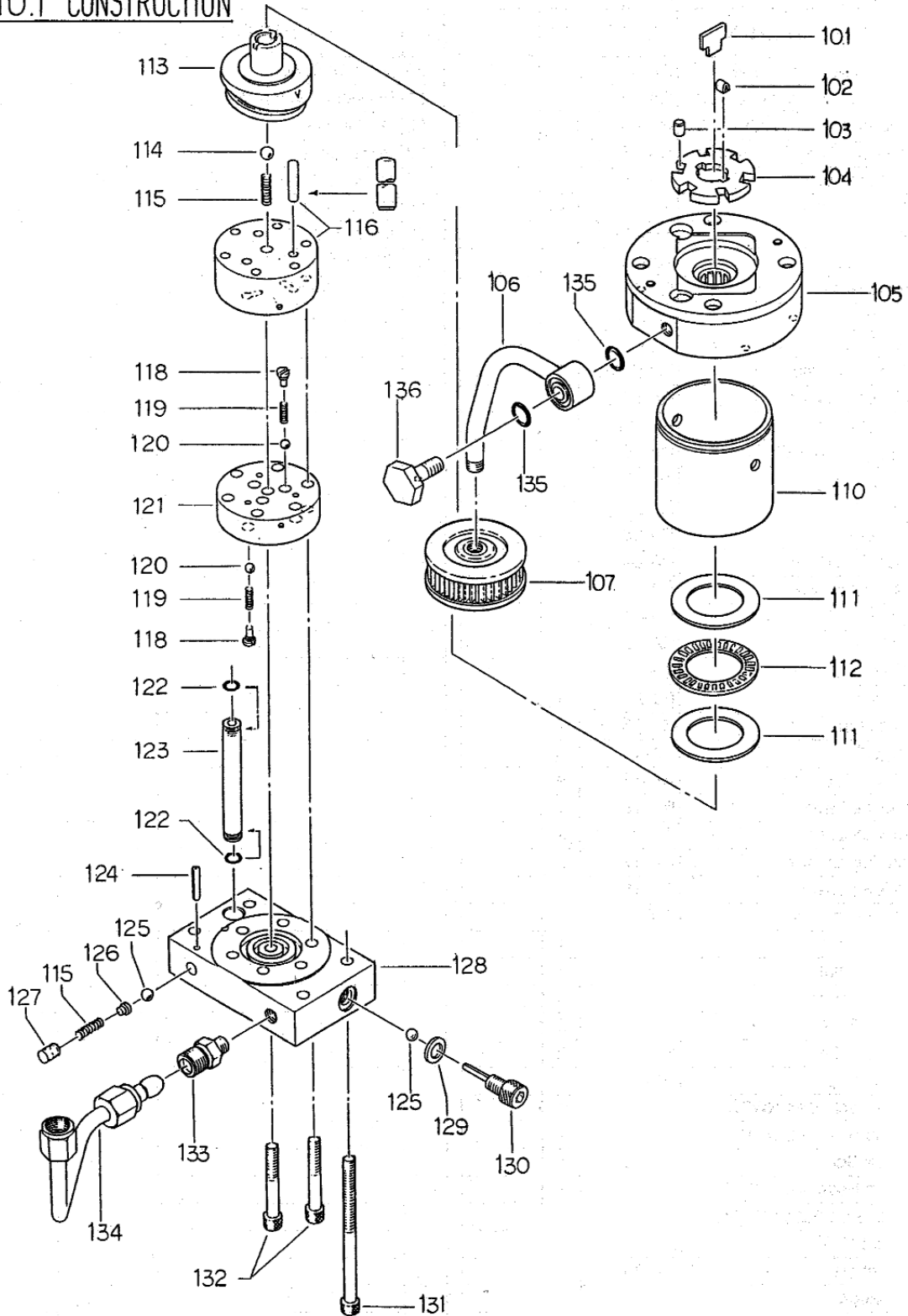
Low Pressure	300 psi
Delivery.....	157 in ³ /min.
High Pressure.....	10,000psi
Delivery.....	36 in ³ /min.
Reservoir Capacity	8 gal.
Weight.....	70 lbs.
Fluid Type.....	P-32X or equal

MODEL R-14EA PARTS DIAGRAM 1 OF 3



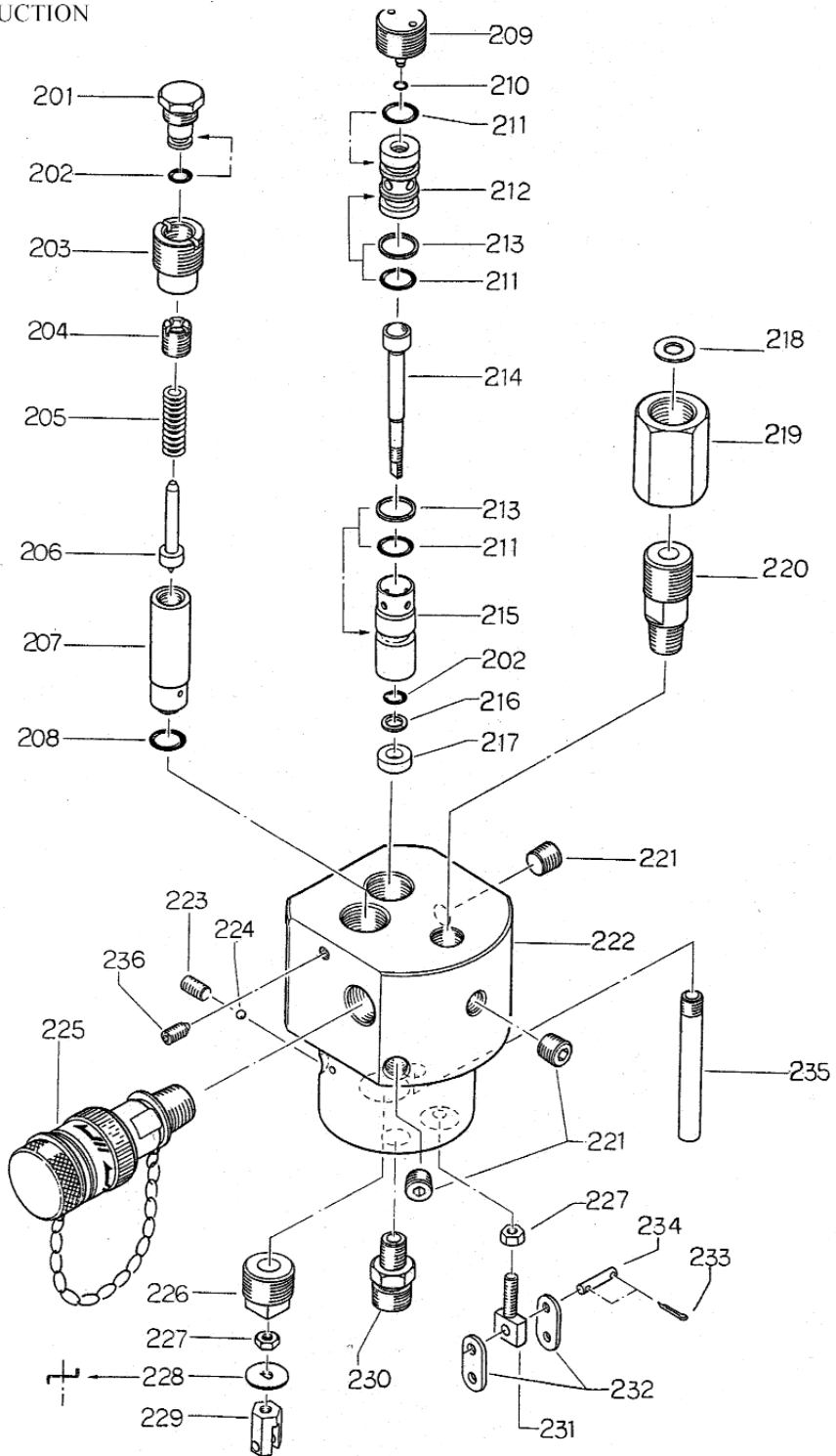
MODEL R-14EA PARTS DIAGRAM 2 OF 3

NO.1 CONSTRUCTION



MODEL R-14EA PARTS DIAGRAM 3 OF 3

NO. 2 CONSTRUCTION



MODEL R-14EA PARTS LIST 1 OF 3

NO.	DESCRIPTION	CODE	QTY.	NO.	DESCRIPTION	CODE	QTY.
1	Pump Ass'y 101--136	RA-01	1	52	Gasket (19)	RA-32	1
2	Pressure Valve Ass'y 201--235	RA-02	1	53	Pump Cover	RA-33	1
3	Solenoid Valve (120V)	RA-03	1	54	M5 X 10 Screw	RF1-01	2
4	M5 X 20 Screw	RA-04	4	55	Motor	RA-34	1
5	M5 Lock Washer	410-09	4	56	OS17233 Oil Seal	RB-10	1
6	Air Vent Nut	13S-24	1	57	Remote Switch W/Cord & Plug	RA-35	1
7	M3 X 6 Screw	13S-23	1	58	Electric Cord Unit	RA-36	1
8	P-9 O-Ring (A)	RF-38	1				
9	Air Vent	13S-21	1				
10	Seal Washer (W14)	13S-20	1				
11	M6 X 20 Screw	700S-35	1				
12	M6 Flat Washer	RA-05	1				
13	M6 X 20 Screw	RF1-02	13				
15	Spring Anchor Pin	RA-06	1				
16	P-3 O-Ring	16-36	1				
17	Main Base	RA-07	1				
18	Gasket (16)	RA-08	1				
19	Push Pin Holder	RA-09	1				
20	M4 X 10 Screw	RA-10	3				
21	Spring (118)	RA-11	1				
22	Push Pin	RA-12	1				
23	M8 Lock Washer	40-25	5				
24	M8 Hex. Nut	E3-92	1				
25	Guide Pin	RA-13	1				
26	Pin (53)	RA-14	4				
27	1.6 X 8 Cotter Pin	RA-15	8				
28	Release Lever	RA-16	1				
29	M8 X 35 Screw	32C-02	4				
30	Terminal Socket	RA-17	2				
31	M4 X 6 Screw	RA-18	1				
32	M4 Lock Washer	410-07	2				
33	M4 X 8 Screw	RA-19	1				
34	M4 Hex. Nut	5N-66	1				
35	Cord Anchor	RA-20	1				
36	M3 X 8 Screw	E3-97	2				
37	M3 Hex. Nut	RA-21	2				
38	Switch Cap	RA-22	1				
39	Receptacle Cap NWPC-252	RA-23	1				
40	Receptacle Cap NWPC-164	RA-24	1				
41	M4 X 8 Screw	RA-25	8				
42	Switch Base Ass'y (120V)	RA-26	1				
43	Gasket (17)	RA-27	1				
44	Gasket (18)	RA-28	1				
45	Oil Gauge	RA-29	1				
47	Oil Reservoir	RA-30	1				
48	Frame	RA-31	1				
50	M8 X 14 Screw	RA-79	4				
51	Pressure Switch KPS700-1	RF-03	1				

MODEL R-14EA PARTS LIST 2 OF 3

NO.	DESCRIPTION	CODE	QTY.	NO.	DESCRIPTION	CODE	QTY.
101	Key (1)	RB-30	1				
102	Key (2)	RB-32	1				
103	6 X 6 Roller	RB-31	6				
104	Rotor	RB-33	1				
105	Vane Cap	RA-39	1				
106	Suction Pipe	RA-41	1				
107	Strainer	RF-25	1				
110	Drum	RB-35	1				
111	Bearing Plate AS-1106	RB-36	2				
112	Needle Thrust Bearing	RB-37	1				
113	Cam Ass'y	RF-26	1				
114	1/4" Ball	26-22	1				
115	Spring (70)	RB-44	2				
116	Cylinder Ass'y	RB-46A	3				
118	Spring Holder	RB-48	6				
119	Spring (4)	16-48	6				
120	3/16" Ball	16-49	6				
121	Check Valve (1)	RB-47	1				
122	P-7 O-Ring	16-60	2				
123	Low Pressure Pipe	RB-53	1				
124	3 X 18 Drive Pin (AW)	RF-33	1				
125	7/32" Ball	16-26	2				
126	Ball Holder	RB-58	1				
127	Spring Holder (1)	RB-57	1				
128	Base	RA-37	1				
129	Copper Gasket (4)	26-20	1				
130	Stopper Screw	RB-60	1				
131	M6 X 80 Screw	E3-77	4				
132	M6 X 40 Screw	RB-61	7				
133	Joint A8-PT1/8	RA-46	1				
134	Pipe	RA-47	1				
135	P-10 O-Ring	100-14	2				
136	Male Swivel Joint	RA-48	1				

MODEL R-14EA PARTS LIST 3 OF 3

NO.	DESCRIPTION	CODE	QTY.	NO.	DESCRIPTION	CODE	QTY.
201	Plug (2)	RA-49	1				
202	P-6 O-Ring (A)	RB-70	2				
203	Plug (1)	RA-50	1				
204	Adjusting Screw	EF-09	1				
205	Spring (120)	EF-10	1				
206	Valve Stem	EF-11	1				
207	Valve Body	RA-54	1				
208	P-10 O-Ring (B)	RA-55	1				
209	Plug (3)	RA-56	1				
210	P-4 O-Ring	410-48	1				
211	P-10A O-Ring	RB-65	3				
212	Valve Seat (1)	RB-67	1				
213	P-10A Back-Up Ring (B.C.)	RB-66	2				
214	Release Valve	RA-67	1				
215	Release Valve Holder	RA-68	1				
216	P-6 Back-Up Ring (E.L.)	RB-71	1				
217	Stopper Ring	RB-72	1				
218	Copper Gasket (3)	RF-04	1				
219	Switch Adapter	RB-03	1				
220	Switch Plug	RA-69	1				
221	PT 1/8" Screw	RB-55	3				
222	Valve Body	RA-70	1				
223	M6 X 10 Screw (F.P.)	RA-71	1				
224	1/8" Ball	40-20	1				
225	Female Coupler IZUMI	100-24	1				
226	Plug (4)	RA-72	1				
227	M5 Hex. Nut	RA-73	2				
228	Stopper Washer	RA-74	1				
229	Support	RA-75	1				
230	Joint A8-PT1/8	RA-46	1				
231	Fixed Pin	RA-76	1				
232	Link	RA-77	2				
233	1.6 X 8 Cotter Pin	RA-15	2				
234	Pin (53)	RA-14	1				
235	Exhaust Pipe	RA-78	1				
236	M5 X 10 Screw (C.P.)	SHC-05	1				

MODEL R-14EA WARRANTY

All Huskie REC-Series battery driven products carry a 5 year warranty, and the ECO-Series carry a 3 year warranty. The BP-70E, BP-70EI, and the BP-70MH batteries carry a 5 year warranty from the date stamped on the battery. The LED indicator on the BP-70-EI battery carries a 1 year warranty from purchase date. Hydraulic hammers carry a one year warranty and all other Huskie products carry a 5 year warranty. Huskie reserves the right to determine all warranty claims. Failure due to misuse, abuse or repairs attempted by anyone other than Huskie Tools, Inc., or an authorized service center render this warranty null and void. Our patented drop-out bypass cartridge can be re-calibrated or tested at no charge for the life of the tool. All factory repaired or reconditioned hydraulic tools carry a one year warranty on parts and labor.

REPAIR AND WARRANTY CLAIMS

All claims must be sent to Huskie for inspection and authorization. A Return Goods Authorization is required before shipping tools to Huskie. Secure the authorization by telephoning 1-800-860-6170 or writing to Huskie's main office with details of claim. Non-warranty repairs are handled using the same procedure. Repairs exceeding 50% of the cost of a new tool will be advised before repairs are made.

PLEASE RETAIN FOR YOUR RECORDS

Purchaser's Name

Address

City, State, Zip

Tool Model Number

Serial Number

Date Purchased From

Purchased From

MODEL R-14EA WARRANTY

HOW TO GET SERVICE UNDER THE TERMS OF THE LIMITED WARRANTY

Return your product directly to Huskie Tools, Inc. as our representative network is not prepared to service the product under the terms of this warranty.

1. Write, call or fax Huskie stating the tool's purchase date and problem. You will be given a RGA # to assure that your merchandise will be properly handled upon its receipt.
2. CAUTION: Make sure the product is packaged adequately so as to prevent damage or loss during transit. The shipment must be prepaid and we recommend that it be insured. A cover letter indicating the reason for the return should be included in order to facilitate repairs.

**SEND THIS PORTION WITH ANY TOOL WHEN REQUESTING REPAIRS,
WARRANTY OR RECONDITIONING WORK.**

PLEASE CALL OR FAX HUSKIE FOR AN RGA#

Customer Job No. _____

Address _____

City _____ **State** _____ **Zip** _____

Tool Model _____

Warranty Claim _____ **Repair Only** _____

Customer Name: _____

Phone (_____) _____

City _____ **State** _____ **Zip** _____

Serial No. _____

Estimate Required: Yes _____ **No** _____



198 N. Brandon Drive
Glendale Heights, Illinois 60139
(630) 893-7755 Fax (800) 345-3767
Toll Free 1-800-860-6170
<http://www.huskiertools.com>
info@huskiertools.com