



Huskie
TOOLS



**Operating Instruction Manual
For HP-700 Hydraulic Hand Pump
with Parts List**

HP-700 SPECIFICATIONS

SPECIFICATIONS

Weight:	20 lbs.
Length:	23"
Oil Reservoir	44 cu/in fluid
1st Stage	.75 cu/in per stroke
2nd Stage	.14 cu/in per stroke

10,000 psi HYDRAULIC HAND PUMP

- Two-Stage Pump Piston for Rapid Advance
- External Pressure Adjustment from 4,000-10,000 psi
- Can be Operated in Any Position
- 3/8" Standard Screw Type Female Coupler
- Knob Type Release Valve

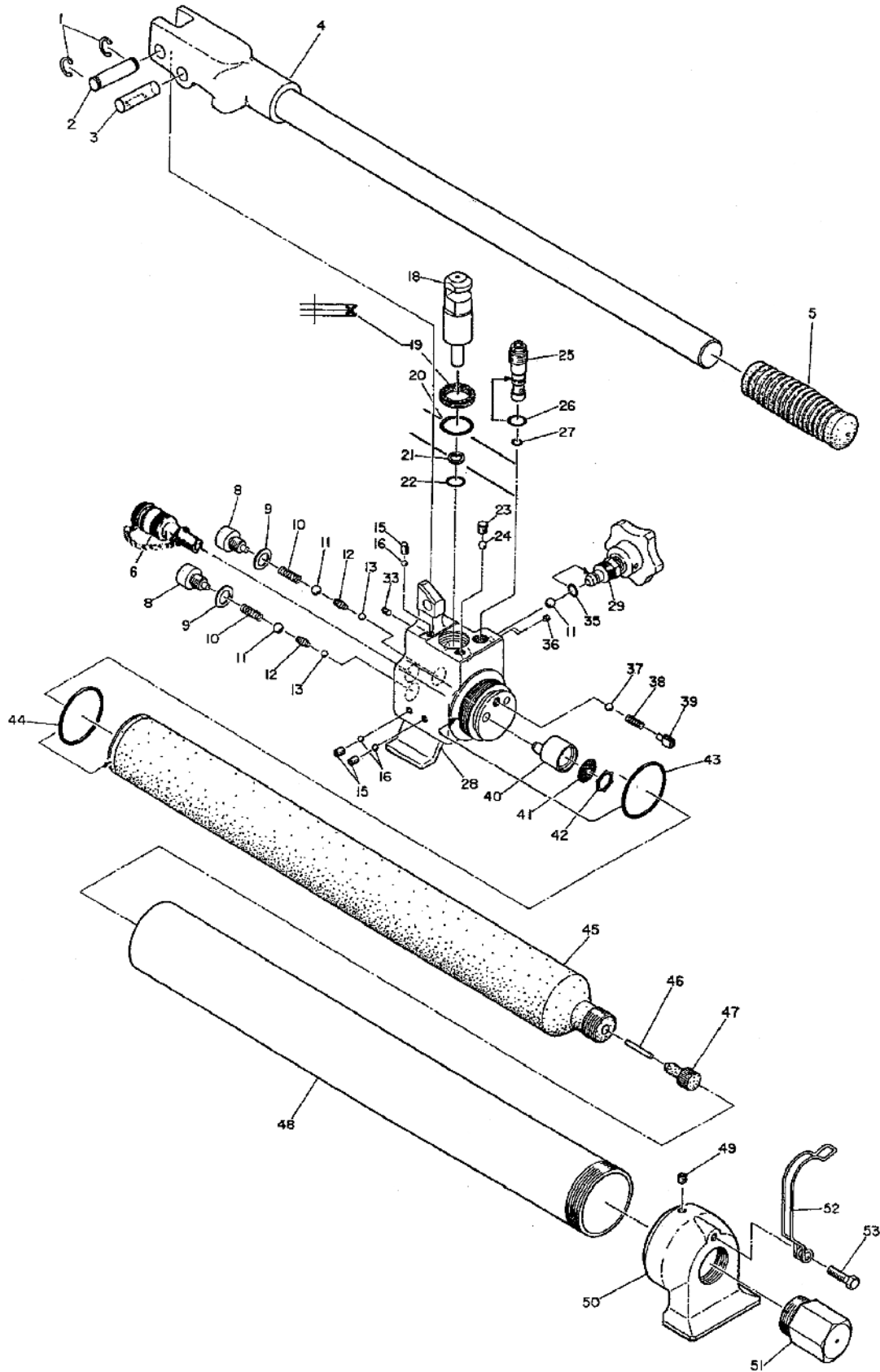
General Information and Troubleshooting

1. When attaching hoses, please be sure all couplers are securely fastened. 90% of our problems arise out of a loose coupler connection. If the unit fails to pump or retract, the problem usually lies with the couplers.
2. Always keep couplers clean by wiping oil and debris from surfaces before connecting hoses to pump or tool.
3. Never move pump by pulling on the electrical cords.
4. Occasionally check the fluid level of the pump. See individual pump operating instructions for proper oil level. When adding fluid, always use EP-32X or equivalent hydraulic fluid.
5. Always open the air breather vent cap on the oil filler port before operating the tool. This will eliminate the problem of a vacuum situation when the oil is pumped from the tank. Always close the air vent when storing to eliminate the problem of oil leakage if the unit is turned over.
6. In the event the unit does not pump, there may be an air blockage in the suction tube which can be eliminated by turning the pump on its side a few times to allow the air bubble to escape from the tube.
7. Pressure setting is preset at 10,000 psi but can be changed to lower settings, if desired. An inline gauge (Huskie PG-1) should be used periodically to determine your required operating pressure. Consult factory for proper adjusting procedure.

Operating Instructions for HP-700

1. Connect all couplers on tool, hose, and pump. Make sure all couplers are secure before operating.
2. Rotate control valve on the pump to the "Close" position; pump handle to operate.
3. All pumps feature an external bypass cartridge that will dump the oil back into the reservoir at a predetermined pressure; factory set at 10,000 psi. When this bypass is reached, the tool should be released and is ready to begin the next cycle.
4. To release the pressure, rotate the control valve to the "OPEN" position and the tool ram will retract.
5. These pumps were designed to provide a manually operated pumping source in places where electric power was not available.
6. An external bypass pressure adjustment valve is easily accessible in event other pressures are required to operate tools. An inline gauge should be used in conjunction with a tool to properly set the output pressure.
7. The pump base can be set on any flat surface to provide pump stability. The handle should be latched in a closed position for storage. The internal fluid reservoir should be checked periodically to assure proper oil level. Remove end cap and replenish oil that has been lost from the connecting and unconnecting of various tool heads. Always use the same fluid type when replenishing hydraulic fluid. Never mix different fluids since incompatibility of fluids may cause the different fluids to congeal. Always change out the fluid completely when in doubt.
8. The HP-700 pump has a bypass relief system incorporated which will dump the fluid when the predetermine pressure (10,000 psi) is reached.
9. These pumps can be operated in any position because of the unique internal fluid reservoir.

Operating Instructions for HP-700



Parts List for HP-700

NO	DESCRIPTION	CODE	QTY	NO.	DESCRIPTION	CODE	QTY
1	CE-10 Snap Ring	40-16	2				
2	Pin (50)	700S-01	1				
3	Pin (51)	700S-02	1				
4	Pump Handle Ass'y	700A-01	1				
5	Pump Handle Grip	700S-04	1				
6	Female Coupler	FC-8/DP-8	1				
7	Not Applicable						
8	Retaining Screw	F700A-07	2				
9	Copper Gasket (7)	E3-68	2				
10	Spring (67)	85-39	2				
11	9/32" Ball	16-40	3				
12	Spring (284)	F700A-08	2				
13	3/16" Ball	16-49	2				
15	M6 X 10 Screw (F.P.)	RA-71	3				
16	5/32" Ball	22-21	3				
18	Pump Piston	700S-05	1				
19	P-26 X-Ring	700S-06	1				
20	P-26 O-Ring	16-55	1				
21	P-10A Back-Up Ring	RB-66	1				
22	P-10A O-Ring	RB-65	1				
23	M8 X 8 Screw (F.P.)	700S-23	1				
24	1/4" Ball	26-22	1				
25	Bypass Cartridge	410-36	1				
26	S-9 O-Ring	410-71	1				
27	P-8 O-Ring (B)	700S-15	1				
28	Body	700A-02	1				
29	Release Knob Ass'y	700A-03	1				
35	P-5 O-Ring	5N-35	1				
36	M5 X 5 Screw	300-73	1				
37	7/32" Ball	16-26	1				
38	Spring (43)	85-49	1				
39	Valve Screw (8)	85-50	1				
40	Strainer	9H-43A	1				
41	Filter Screen	410-73	1				
42	SI-20 Ring	410-74	1				
43	G-45 O-Ring	55A-26	1				
44	P-36 O-Ring	55-22	1				
45	Oil Reservoir (32)	700A-04	1				
46	Magnet	ROB-25	1				
47	Reservoir Cap	410-55	1				
48	Reservoir Cover	700A-05	1				
49	M6 X 6 Screw (C.P.)	85-41	1				
50	Support Stand	700S-32	1				
51	End Cap	700S-331	1				
52	Spring (212)	700S-34	1				
53	M6 X 20 Screw	700S-35	1				

MODEL HP-700 WARRANTY

Please see our complete warranty at www.huskietools.com/warranty.cfm.

REPAIR AND WARRANTY CLAIMS

All claims must be sent to Huskie for inspection and authorization. A Return Goods Authorization is required before shipping tools to Huskie. Secure the authorization by telephoning 1-800-860-6170 or writing to Huskie's main office with details of claim. Non-warranty repairs are handled using the same procedure. Repairs exceeding 50% of the cost of a new tool will be advised before repairs are made.

PLEASE RETAIN FOR YOUR RECORDS

Purchaser's Name: _____

Address: _____

City, State, Zip: _____

Tool Model Number: _____

Serial Number: _____

Date Purchased: _____

Purchased From: _____

MODEL HP-700 WARRANTY

HOW TO GET SERVICE UNDER THE TERMS OF THE LIMITED WARRANTY

Return your product directly to Huskie Tools, Inc. as our representative network is not prepared to service the product under the terms of this warranty.

1. Write, call or fax Huskie stating the tool's purchase date and problem. You will be given a RGA # to assure that your merchandise will be properly handled upon its receipt.
2. CAUTION: Make sure the product is packaged adequately so as to prevent damage or loss during transit. The shipment must be prepaid and we recommend that it be insured. A cover letter indicating the reason for the return should be included in order to facilitate repairs.

SEND THIS PORTION WITH ANY TOOL WHEN REQUESTING REPAIRS, WARRANTY OR RECONDITIONING WORK

Please call or Fax Huskie for an RGA#

Customer Job No. _____

Address _____

City _____ State _____ Zip _____

Tool Model _____

Warranty Claim _____ Repair Only _____

Customer Name: _____

Phone (_____) _____

City _____ State _____ Zip _____

Serial No. _____

Estimate Required: Yes _____ No _____



198 N. Brandon Drive
Glendale Heights, IL 60139
1-800-860-6170
FAX: 800-345-3767
www.huskietools.com
info@huskietools.com