

HUSKIE TOOLS, INC.



**Operating Instruction Manual
For EP-750A Compression Tool
and Parts List**

EP-750A SPECIFICATIONS

SPECIFICATIONS

Output	6.2 ton
Weight	11.5 lbs.
Length	23"
Jaw Opening	1.5"

CONNECTOR RANGE

#10 AWG-750 MCM

6.2 TON FLIP-TOP CRIMPING TOOL

- Designed to Crimp Anderson Connectors & Other Brand Mfg. to ANSI C119.4
- Rapid Advance
- Flip-Top Head Design
- Eliminates the need for Dies
- 6.2 Ton Output
- External Pressure Adjustment



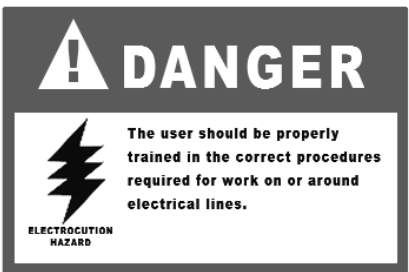
READ

Instruction Manual
and Product Decals
before use.



Keep Fingers Out Of Pinch Areas

Always Wear Safety Glasses



The User Should Be Properly Trained in the Correct Procedures Required For Work Around Electrical Lines.



Do Not Operate Without Dies



BE SURE THE CONNECTOR IS PROPERLY LOCATED BETWEEN ALL FOUR INDENTERS, OTHERWISE TOOL DAMAGE CAN OCCUR.

Be Sure The Connector is Properly Located Between All Four Indenters. Otherwise Tool Damage Can Occur.

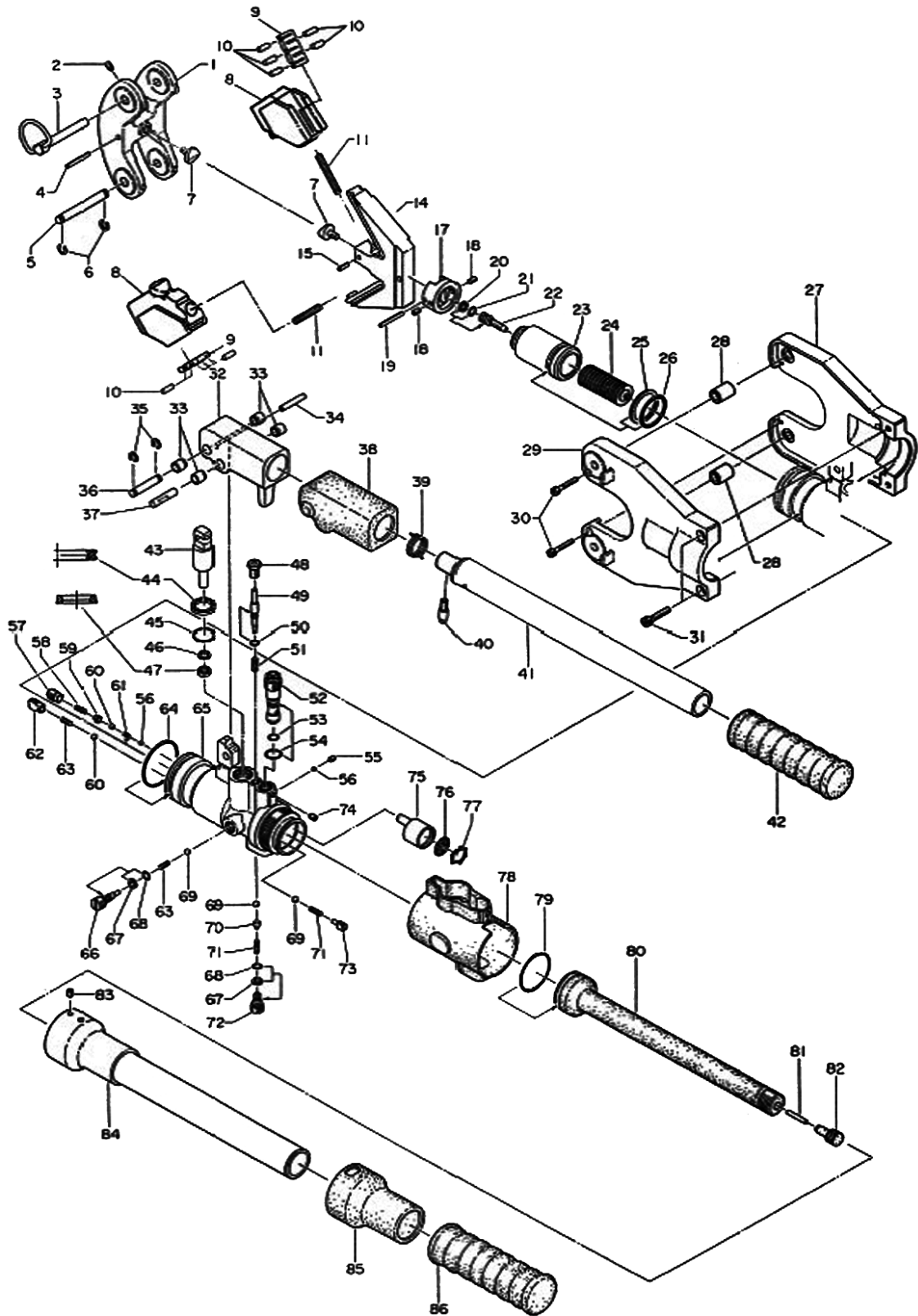
GENERAL INFORMATION AND TROUBLESHOOTING

1. Never attempt to adjust pressure setting without the use of the proper test gauge. Consult factory for proper adjusting procedure.
2. All manually operated hydraulic compression tools are equipped with our external replaceable bypass cartridge. These cartridges should not have to be replaced for 10,000 to 12,000 compressions.
3. Indentor hang up is common with all types of compression tools. Should this occur, the jaws can easily be separated by holding the pump handle in the release position while prying the jaws apart. Never attempt to hit connector or tool jaw with hammer as this will damage connector and tool.
4. If tool fails to advance upon receipt or after an extended period of storage, invert tool and rap compression head sharply on ground. The suction valve check ball can become stuck after extended storage or during shipment, not allowing the tool to advance.
5. Always clean tool after use to keep ram track clear of dirt and debris.

OPERATING INSTRUCTIONS FOR THE EP-750A

1. Check your connector manufacturers recommendations on using a dieless compression tool with the connector and cable being used. Not all connectors are suitable for dieless tool applications.
2. Position connector between indentors and pump tool handle to hold connector in place. Fully insert cable into barrel of connector. Be sure connector is properly positioned in the center of the indentors. Damage to the tool and an improper crimp will result from a misaligned connector.
3. Continue to pump the tool handle and completely crimp the connector. These tools have a built in by-pass cartridge that will automatically activate when full pressure is reached. There will be a noticeable decrease in handle pressure when the by-pass is reached. A high pitched squeaking sound is normal when the tool is operating in the high pressure stage.
4. To release the tool, lift pump handle out and rotate clockwise until handle stops. With handle twisted, push down so the pin on the handle contacts the release pin on the tool body. The ram will retract and the tool is ready to begin its next cycle. In the event the tool will not release due to excess flash, hold release pin down with handle and pry tool jaws apart.

MODEL EP-750A DIAGRAM



MODEL EP-750A PARTS LIST

NO.	DESCRIPTION	CODE	QTY.
1	Yoke	6H-04B	1
2	M3 X 5 Screw	UC-37A	1
3	Slide Pin	6H-01A	1
4	3 X 28 Drive Pin (AW)	38A-01	1
5	Pin (156)	6H-02A	1
6	CE-8 Snap Ring	16-09	2
7	Nib	UC-34	2
8	Side Jaw	6H-10C	2
9	Roller Retainer	UC-08	2
10	Roller	UC-07	10
11	Spring (390)	6H-11	2
14	Cam Yoke	UC-33B	1
15	3 X 12 Drive Pin (AW)	40-05	1
17	Cam Yoke Holder	UC-32	1
18	M4 X 6 Screw (F.P.)	16-42	2
19	4 X 30 Drive Pin (AW)	UC-14	1
20	P-6 Back-Up Ring (B.C.)	UC-28	1
21	P-6 O-Ring	RB-70	1
22	Retaining Screw	UC-12	1
23	Ram	UC-36	1
24	Ram Spring (388)	UC-35	1
25	P-28 Back-Up Ring (B.C.)	55D-03	1
26	P-28 O-Ring	300-21	1
27	Head (2)	6H-09B	1
28	Roller	6H-08B	2
29	Head (1)	6H-07B	1
30	M4 X 30 Screw	ET-46	2
31	M6 X 30 Screw	E3-49	2
32	Pump Handle Head	85-59	1
33	Bushing	85-58	4
34	3 X 6 Dowel Pin (G)	UC-15	1
35	CE-7 Snap Ring	40-49	2
36	Pin (35)	85-55	1
37	Pin (36)	85-56	1
38	Handle Head Insulation	300-07	1
39	Spring (146)	85-60	1
40	Push Pin	85-61	1
41	Pump Handle	UC-18	1
42	Pump Handle Grip (2)	410-31	1
43	Pump Piston	85-30	1
44	P-18 X-Ring	85-31	1
45	P-18 O-Ring (C.P.)	UC-19	1
46	P-8 Back-Up Ring (B.C.)	85-33	1
47	PS-8 Pent Seal	16-44	1
48	Release Valve Screw (7)	85-35	1
49	Release Valve Stem	410-35	1
50	P-3 O-Ring (C.P.)	UC-27	2
51	Spring (144)	85-37	1

NO.	DESCRIPTION	CODE	QTY.
52	Bypass Cartridge	410-36	1
53	P-8 O-Ring (C.P.)	410-43	1
54	S-9 O-Ring	410-71	1
55	M4 X 4 Screw (F.P.)	85-47	1
56	1/8" Ball	40-20	2
57	Valve Screw (1)	300-11	1
58	Spring (227)	300-31	1
59	Spring Holder	300-32	1
60	3/16" Ball	16-49	2
61	Spring (164)	85A-07	1
62	Valve Screw (12)	85A-08	1
63	Spring (4)	16-48	2
64	P-42 O-Ring	9H-17	1
65	Body	UC-38	1
66	Suction Valve Plug	410-46	1
67	P-4 Back-Up Ring (B.C.)	410-47	2
68	P-4 O-Ring (C.P.)	410-48A	2
69	7/32" Ball	16-26	3
70	Spring Holder	410-51	1
71	Spring (43)	85-49	2
72	Valve Plug (1)	410-52	1
73	Valve Screw (8)	85-50	1
74	M5 X 5 Screw	300-73	1
75	Strainer	410-72A	1
76	Filter Screen	410-73	1
77	SI-20 Ring	410-74	1
78	Body Insulation	300-20N	1
79	P-28 O-Ring	300-21	1
80	Oil Reservoir (6)	300-22	1
81	Magnet	ROB-25	1
82	Reservoir Cap	410-55	1
83	M4 X 5 Screw (C.P.)	55A-24	1
84	Body Handle	UC-26	1
85	Body Handle Insulation	300-26	1
86	Body Handle Grip	300-27	1

MODEL EP-750A WARRANTY

All Huskie REC-Series battery driven products carry a 5 year warranty, and the ECO-Series carry a 3 year warranty. The BP-70E, BP-70EI, and the BP-70MH batteries carry a 5 year warranty from the date stamped on the battery. The LED indicator on the BP-70-EI battery carries a 1 year warranty from purchase date. Hydraulic hammers carry a one year warranty and all other Huskie products carry a 5 year warranty. Huskie reserves the right to determine all warranty claims. Failure due to misuse, abuse or repairs attempted by anyone other than Huskie Tools, Inc., or an authorized service center render this warranty null and void. Our patented drop-out bypass cartridge can be re-calibrated or tested at no charge for the life of the tool. All factory repaired or reconditioned hydraulic tools carry a one year warranty on parts and labor.

REPAIR AND WARRANTY CLAIMS

All claims must be sent to Huskie for inspection and authorization. A Return Goods Authorization is required before shipping tools to Huskie. Secure the authorization by telephoning 1-800-860-6170 or writing to Huskie's main office with details of claim. Non-warranty repairs are handled using the same procedure. Repairs exceeding 50% of the cost of a new tool will be advised before repairs are made.

PLEASE RETAIN FOR YOUR RECORDS

Purchaser's Name

Address

City, State, Zip

Tool Model Number

Serial Number

Date Purchased From

Purchased From

MODEL EP-750A WARRANTY

HOW TO GET SERVICE UNDER THE TERMS OF THE LIMITED WARRANTY

Return your product directly to Huskie Tools, Inc. as our representative network is not prepared to service the product under the terms of this warranty.

1. Write, call or fax Huskie stating the tool's purchase date and problem. You will be given a RGA # to assure that your merchandise will be properly handled upon its receipt.
2. CAUTION: Make sure the product is packaged adequately so as to prevent damage or loss during transit. The shipment must be prepaid and we recommend that it be insured. A cover letter indicating the reason for the return should be included in order to facilitate repairs.

**SEND THIS PORTION WITH ANY TOOL WHEN REQUESTING REPAIRS,
WARRANTY OR RECONDITIONING WORK.**

PLEASE CALL OR FAX HUSKIE FOR AN RGA#

Customer Job No. _____

Address _____

City _____ **State** _____ **Zip** _____

Tool Model _____

Warranty Claim _____ **Repair Only** _____

Customer Name: _____

Phone (_____) _____

City _____ **State** _____ **Zip** _____

Serial No. _____

Estimate Required: Yes _____ **No** _____



198 N. Brandon Drive
Glendale Heights, Illinois 60139
(630) 893-7755 Fax (800) 345-3767
Toll Free 1-800-860-6170
<http://www.huskiertools.com>
info@huskiertools.com