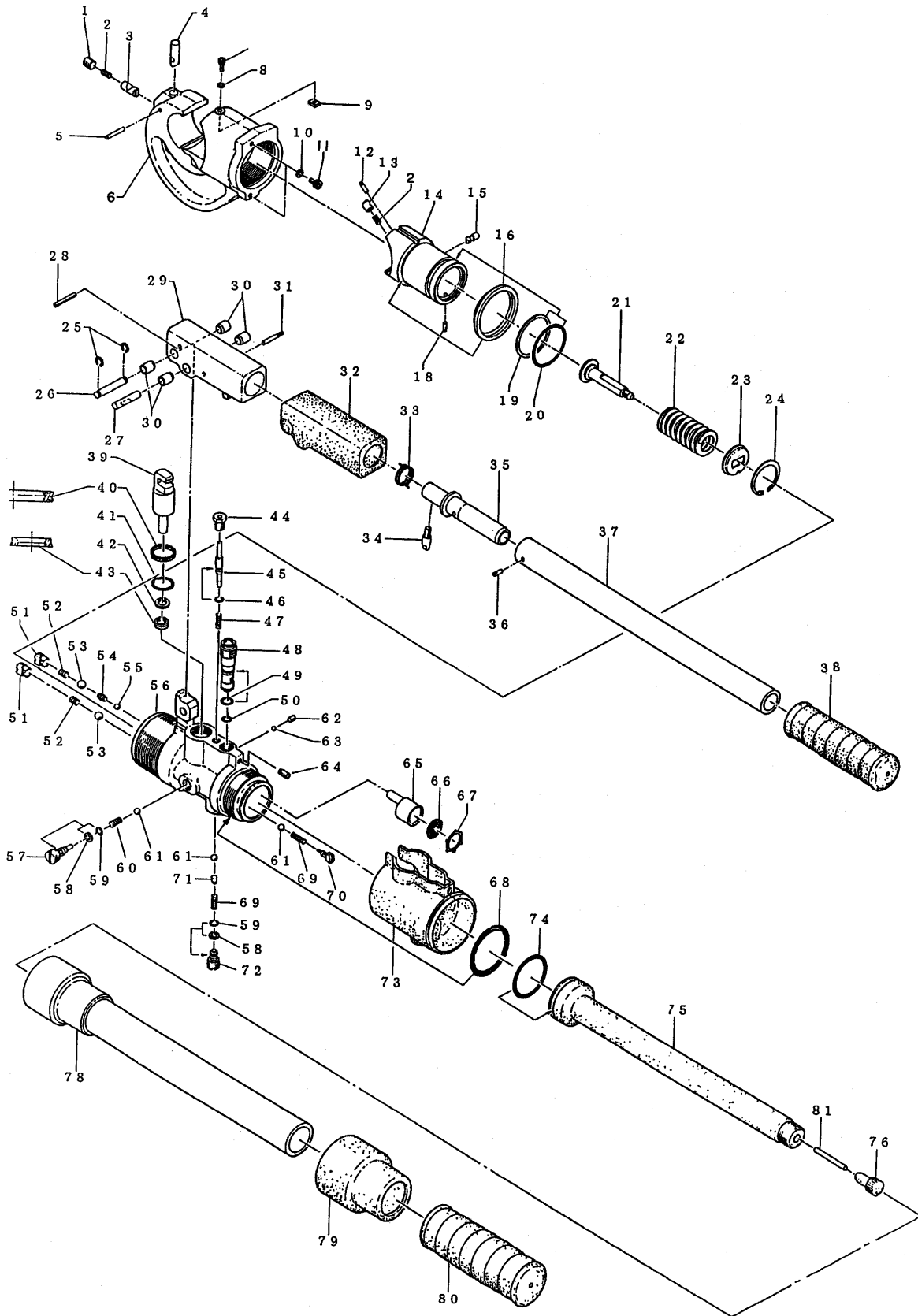


# MODEL EP-410 DIAGRAM



## MODEL PARTS LIST EP-410

NO.	DESCRIPTION	CODE	QTY	NO.	DESCRIPTION	CODE	QTY
1	M10 X 10 Screw (F.P.)	16-41	1	50	P-8 O-Ring (C.P.)	410-43	1
2	Spring (177)	410-01	2	51	Valve Screw (10)	410-44	2
3	Retainer Pin (A)	410-02	1	52	Spring (67)	85-39	2
4	Die Release Pin (A)	410-03	1	53	9/32" Ball	16-40	2
5	2.5 X 25 Drive Pin (BW)	410-04	1	54	Spring (66)	85-40	1
6	Head	410-05	1	55	3/16" Ball	16-49	1
7	M4 X 10 Screw	410-06	1	56	Body	410-45	1
8	M4 Lock Washer	410-07	1	57	Suction Valve Plug	410-46	1
9	Key	410-08	1	58	P-4 Back-Up Ring (B.C.)	410-47	2
10	M5 Lock Washer	410-09	2	59	P-4 O-Ring (C.P.)	410-48A	2
11	M5 X 6 Screw	410-10	2	60	Spring (4)	16-48	1
12	2.5 X 14 Drive Pin (BW)	410-11	1	61	7/32" Ball	16-26	3
13	Retainer Pin (B)	410-12	1	62	M4 X 4 Screw (F.P.)	85-47	1
14	Ram	410-13	1	63	1/8" Ball	40-20	1
15	Die Release Pin (B)	410-14	1	64	M5 X 8 Screw	410-49	1
16	Dust Seal	430-03	1	65	Strainer	410-72A	1
18	2.5 x 8 Dowel Pin (B)	410-17	1	66	Filter Screen	410-73	1
19	P-40 Back-Up Ring (B.C.)	22-16	1	67	SI-20 Ring	410-74	1
20	P-40 O-Ring (C.P.)	410-70	1	68	G-40 O-Ring	P100A-05	1
21	Ram Spring Guide	410-18	1	69	Spring (43)	85-49	2
22	Spring (65)	410-19	1	70	Valve Screw (22)	410-80	1
23	Ram Spring Support	410-20	1	71	Spring Holder	410-51	1
24	OV-36 Snap Ring	410-21	1	72	Valve Plug (1)	410-52	1
25	CE-7 Snap Ring	40-49	2	73	Body Insulation	410-53	1
26	Pin (85)	410-22	1	74	G-30 O-Ring	75-26	1
27	Pin (84)	410-23	1	75	Oil Reservoir	410-54	1
28	5 X 32 Dowel Pin (G)	85-57A	1	76	Reservoir Cap	410-55	1
29	Pump Handle Head	410-24	1	78	Ass'y(Yellow)	410-58B	1
30	Bushing	410-25	4	79	Insulation	410-59	1
31	4 X 26 Dowel Pin (G)	410-26	1	80	Body Handle Grip	410-60	1
32	Handle Head Insulation	410-27	1	81	Magnet	ROB-25	1
33	Spring (146)	85-60	1				
34	Push Pin	85-61	1				
35	Pump Handle Stem	410-28	1				
36	3 X 8 Dowel Pin (G)	410-29	1				
37	Pump Handle	410-30	1				
38	Pump Handle Grip (2)	410-31	1				
39	Pump Piston	410-32	1				
40	P-20 X-Ring	410-33	1				
41	P-20 O-Ring (C.P.)	410-34A	1				
42	P-8 Back-Up Ring (B.C.)	85-33	1				
43	PS-8 Pent Seal	16-44	1				
44	Release Valve Screw (7)	85-35	1				
45	Release Valve Stem	410-35	1				
46	P-3 O-Ring (C.P.)	UC-27	1				
47	Spring (144)	85-37	1				
48	Bypass Cartridge	410-36	1				
49	S-9 O-Ring	410-71	1				