



TIGER

A SPARTACO COMPANY

Pole Pulling & Material Handling Equipment



Created By Linemen For Linemen



Created By Linemen For Linemen

Engineered for safety and efficiency, TiiGER® products were developed by professional linemen.

The TiiGER® pole puller for wood and metal utility pole removal is designed to reduce injuries associated with using a boom truck. It also reduces boom damage and maintenance costs due to pole pulling.

Our material handling products include a unique pole dolly with 180° steering plus dollies for handling transformers and utility equipment.

TiiGER® products are manufactured in the U.S. and used by major utilities in the U.S. and international countries.



TiiGER

A SPARTACO COMPANY

195 Internationale Blvd. - Glendale Heights, IL 60139
800.860.6170

www.SpartacoGroup.com

Pole Puller

Pole Puller	4
Clamshell Attachment	5
Hydraulic Pumps	6
Pole Puller Storage Systems	7

Equipment Dollies

Pole Dolly	8
Load Deck Dolly	9
Transformer Dollies	10-11

Reel Rack

12

Ground Rod Drivers

13

Auger Stand

14



POLE PULLER FOR WOOD POLES



Lightest, Safest Pole Puller On The Market

Remove poles safely and efficiently with the TiiGER® Pole Puller. At 57 pounds, our Pole Puller is the lightest and safest on the market.

Utilizing a swivel and back plate, a chain provides maximum grip as the hydraulic cylinder removes the pole.

The low attachment point allows chain and back plate to grip cut poles up to 14" from the ground. To minimize tipping, base plate has the lowest possible center of gravity.

Pole Puller can be disassembled for easy transport and storage.

- Reduces injury associated with using a boom truck
- Reduce boom damage & maintenance costs from pulling poles
- Increase productivity by saving time
- Hook assembly manufactured with all stainless steel components
- 1/2" alloy chain is proof-tested for durability and strength
- Ultra-lightweight cylinder is only 57 pounds with a lifting capacity of 50,120 pounds.



Back Plate prevents chain roll-up and slippage.



Pole Puller Pad provides greater surface area to resist forces of the ram and prevents base plate from kicking back during operation. SOLD SEPARATELY



Swivel chain hook assembly is used to pre-tension chain to provide maximum lift per stroke.

DESCRIPTION	PART NUMBER
Pole Puller (Does not include Pad)	4001D

NOTE

Flat Face Couplers sold separately.
Additional length of chain upon request.

COMPONENT PARTS	PART NUMBER
Pole Puller Pad (Optional)	HA0040
Swivel & Hook Assembly (No chain or back plate)	HA0016
Back Plate - Standard	HA0030
Back Plate - Long Tooth	4041B
Base Plate	HA0008
Hydraulic Cylinder	HA0015
Chain, 1/2" x 6'	EF0001
Flat Face Coupler Kit	KA0003

SPECIFICATIONS FOR 4001D POLE PULLER	
Hydraulic Cylinder	57 lbs.
Base Plate	25 lbs.
Back Plate	7 lbs.
Swivel Chain Hook Assembly	36 lbs
Chain - 6 feet - 1/2" Alloy	15 lbs.
Pole Puller Pad	14 lbs.
Operating Pressure	2,800 PSI max.
Life at Maximum Pressure	50,120 lbs.



CLAMSHELL ATTACHMENT

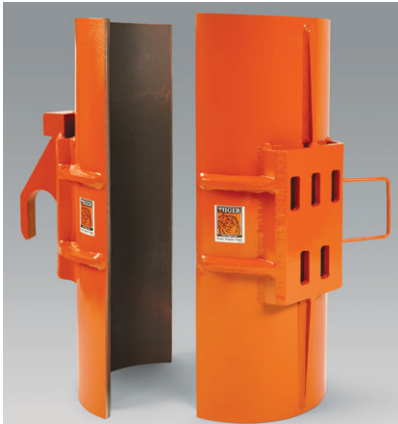
Clamshell For Metal Pole Pulling

Safely and efficiently remove metal poles with the TiiGER® Clamshell Attachment and Pole Puller.

Clamshell easily attaches to Pole Puller (Part #4001D) to remove metal poles. Manufactured with high yield strength steel, Clamshell is coated with a proprietary gripping agent to secure attachment to metal pole.

Clamshell Attachment and Pole Puller can be disassembled for easy transport and storage.

Pole Puller attachment assemblies include Clamshell for swivel plate, Clamshell with fixed back plate and 8' of 1/2" alloy chain.



Clamshell Attachment



PART NUMBER	POLE DIAMETER	WEIGHT
SP1000	8" to 12"	86 lbs.
SP1100	12" to 16"	110 lbs.
SP1200	16" to 20"	134 lbs.

NOTE
Pole Puller unit with accessories sold separately
Clamshell attachment includes chain



CUBE HYDRAULIC PUMPS



Cube I

Portable Hydraulic Pumps For Pole Pulling

Tiiger Cube I is a compact, portable gasoline-powered hydraulic pump designed to complement the Pole Puller (#4001D). Our most popular model for pole pulling, this lightweight unit features all-terrain tires for easy portability.

- ¾" steel handle for durability and quality
- 1-½ gallon hydraulic fluid reservoir
- 1" steel tubing frame
- 4-way 3-position manual valve with relief
- 19" extending handle
- 10" all-terrain pneumatic tires for easy portability

Cube II and III feature an enclosed roller cage. Offering more power and versatility than Cube I, these models offer a top-mounted tool tray.

Cube II has an air-cooled heater exchange for fluid.

Cube III has an over-temperature safety switch for fluid.

- 4 top-mounted pick-up points
- Removable top-mounted hinged wire mesh tool tray - 50# cap
- Electric start with battery
- Piston hydraulic pump
- Relief valve and pressure switch
- Hydraulic oil air cooler or temperature safety switch
- Manual 4-way valve
- 10-gallon hydraulic reservoir
- Spin-on return line filter
- 4 pneumatic wheels - 2 fixed and 2 swivel
- 13 HP commercial grade gas engine



Cube II and III



DESCRIPTION	PART NUMBER
Cube I Hydraulic Pump	HB0006
Hydraulic Coupler Kit	KA0003
Cube II Hydraulic Pump with an air-cooled heat exchanger for fluid.	HB0010-II
Cube III Hydraulic Pump with a over-temperature safety switch for fluid.	HB0011-III
Set of Companion Hoses/Couplers	GD0005

SPECIFICATIONS			
	Cube I	Cube II	Cube III
Dimensions	20" x 20" x 17"	20 1/8" x 34 1/8" x 46 1/4"	
Weight	92 lbs. (dry)	340 lbs.	325 lbs.
Pressure	2,800 PSI	2,000 PSI	
Flow	1.8 to 2.0 GPM	1.5 to 7.5 GPM	
Speed (ext.)	30-40 seconds		
Speed (ret.)	30-40 second		
Engine		780 to 3,300 RPM	

NOTE:
Modifications to engine governor or flow adjustment will void warranty.

STORAGE SYSTEMS

Protect And Organize Equipment

Designed to store the TiiGER® Pole Puller and components, our Case Organizers are ideal for transporting and protecting equipment.

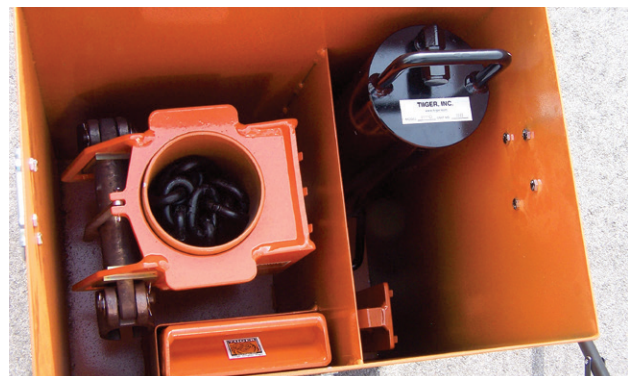
The Deluxe Case accommodates all pole puller components, including pole puller pad, and is designed with over 3 inches of clearance under the case for transportation.

The Wheeled Case accommodates all components excluding the pole puller pad, and is equipped with wheels and handle.

- Custom design for pole puller
- Full width hinge prevents cover misalignment
- Handles on top and sides
- Constructed with 1/8" steel plate for durability
- Brackets and hold-down straps to secure each component & prevent damage while transporting
- Deluxe Case organizer utilizes a 3 1/4" clearance for use of with forklift



Deluxe Case With Forklift Clearance



Wheeled Case With Pull Handle

PART NUMBER	DESCRIPTION	HEIGHT	WIDTH	DEPTH	WEIGHT
HA0061W	Wheeled Case	28.5"	19.25"	14.25"	105 lbs.
HA0060	Deluxe Case	18.5"	32.25"	24.50"	86 lbs.



STEERABLE DOLLY FOR POLES



180° Steering For Easy Handling

The TiiGER® Two-Wheel Pole Dolly is equipped with a high capacity roller cradle for easy transportation of poles in excess of 2,000 lbs.

Large low-pressure turf tires handle any terrain and the portable design allows for quick Load Deck attachment.

Designed with 180° steering for forward, backward and side-to-side motion.

- Excellent platform for framing pole, with roller cradle allowing 360° rotation
- 32" wide
- Sealed wheel bearings and bronze steering bushings
- Constructed with high yield strength steel
- Safe and effective pole handling system
- Maneuverable on a variety of terrain
- Handle can be placed in front of dolly or on either side of steerable axle.



PART NUMBER	DESCRIPTION	HEIGHT WITH CRADLE	WIDTH	LENGTH (NO HANDLE)	STEERING	WEIGHT (TOTAL)	WEIGHT (ROLLER CRADLE ONLY)	CAPACITY
1025A	Two-Wheel Pole Dolly	21.25"	32"	23.25"	180 lbs.	157 lbs.	41 lbs.	2,200 lbs.

Part Number 1025A Includes: Two-Wheel Dolly, Roller Cradle, Straight Handle And Strap



STEERABLE LOAD DECK DOLLY



Field-Tough Material Handling

The safe, efficient choice in material handling equipment.

Expand the capability of the Pole Dolly (Part #1025A) with the addition of a Load Deck. Deck provides a work surface for handling a variety of tools and equipment.

Easily attaches to Pole Dolly with spring latch.

Designed to transport pad mounted transformers, the Load Deck Dolly is the toughest utility carrier in the field.

- 180° steering for complete movement control
- 3,000 lbs. load capacity



DESCRIPTION	PART NUMBER
Load Deck Dolly - (2) Two-Wheel Dollies, Load Deck, Straight Handle & 'T' Handle	1030A

COMPONENTS	PART NUMBER
Load Deck	GG0089
Two-Wheel Dolly	1100A
Roller Cradle	1125A
Hold-Down Strap	EF0002
Straight Handle	GH0027
'T' Handle	1110A

SPECIFICATIONS	
Dimensions #1030A	24"H x 32"W x 97"L
Load Deck Capacity	3,000 lbs.
Load Deck Dimensions	31"W x 47.5"L
Weight (Complete Assembly #1030A)	365 lbs.
Weight (Load Deck)	125 lbs.
Weight (Manual 2-Side Dolly)	116 lbs. each



TRANSFORMER DOLLY



Move Transformers Easily & Safely

The Tiiger Pole Mount Transformer Dolly reduces injuries due to heavy lifting.

Extremely functional, it maintains vertical positioning of the transformer to prevent leakage. Equipped with large low-pressure turf tires, the Pole Mount Transformer Dolly allows for easy transportation over any terrain.

A third pilot wheel provides easy maneuverability while dolly is loaded.

- Safe & easy handling of pole-mount transformers
- Accommodates various size transformers
- Compact design
- Constructed with high-yield strength steel
- Maintains vertical position of transformer to prevent leakage
- Fits through standard 36" gate
- Standard trailer hub and sealed bearings
- Third pilot wheel for 360° steering



DESCRIPTION	PART NUMBER
Dolly For Pole Mount Transformer With 36" Working Height	HA0075
Optional Extension for 44" Working Height	HA0076

SPECIFICATIONS	
Width	40"
Length	39"
Tire Size	165/65/-8
Capacity	900 lbs.



TRANSFORMER DOLLY

Dolly With Winch For Easy Loading

The Tiiger Utility Transformer Dolly features a three-wheel design for an extremely stable load platform and easy positioning for loading and unloading.

A crank style winch lifts pad- and pole-mount transformers and large, low-pressure turf tires handle a variety of terrains.

Includes all accessories: spreader bar, hooks, attachment bolts and straps.

- Stable load platform
- Trailer hub with sealed bearings
- Constructed with high-yield steel
- Easily positioned for loading and unloading



Transporting Pole-Mount Transformer



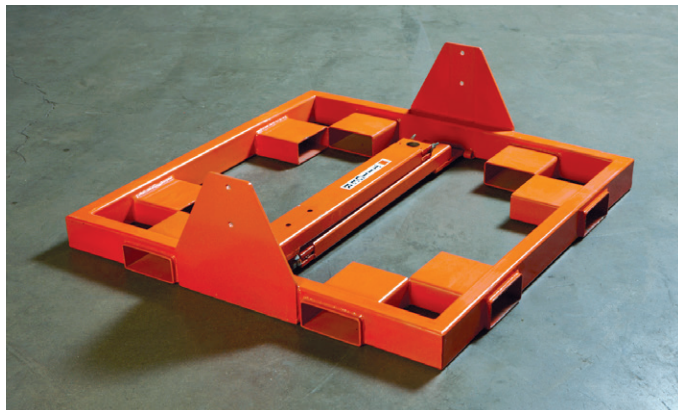
Transporting Pad-Mount Transformer

SPECIFICATIONS	
Height	60"
Width	40"
Length	100"
Weight	210 lbs.
Capacity	1,000 lbs.

DESCRIPTION	PART NUMBER
Utility Transformer Dolly	HA0080



PORTABLE REEL RACK



Load-N-Go

The portable solution for handling reels at the shop or on a job site, Load-N-Go handles multiple reels or a single reel with a maximum reel diameter of 61" and a width of 41".

Use for installation of underground wires in open trenches or in conduits and overhead wires.

- Fits most pick-up trucks or trailers
- Fork lift pockets on all sides
- Equipped with reel locking collars
- Lifting points for handling with a crane
- Collapsible design for easy storage
- Tie points for securing

Load-N-Go is not designed for tension stringing applications.



DESCRIPTION	PART NUMBER
Load-N-Go Reel Rack	LNG2012

SPECIFICATIONS	
Dimensions	48" L x 48.75"W x 34" H
Weight	295 lbs.
Collapsed Dimensions	48"L x 48.75"W x 4"H
Capacity	2,000 lbs.
Maximum Reel Size	41"Width x 61" Diameter



GROUND ROD DRIVERS

Safer Installation Of Ground Rods

Tiiger ground rod drivers eliminate the need to climb above the rod for installation.

- Position at any height for easy and safe installation
- Positioning guide for driver socket of rotary hammer to be engaged to ground rod driver
- High quality steel with backside support ridge
- Heat treated for long service life
- Stay on the ground instead of climbing ladder

For use with rotary hammer and driver socket The use of impact tools or jack hammers may shorten service life.



Available Sizes: 1/2" , 5/8" & 3/4" Rod Diameter

DESCRIPTION	PART NUMBER
Ground Rod Driver - 1/2" Rod Dia. (Blue)	GRD0010
Ground Rod Driver - 5/8" Rod Dia. (Red)	GRD0015
Ground Rod Driver - 3/4" Rod Dia. (Green)	GRD0020
Socket	SK1014



PORTABLE AUGER STAND



Easy Auger Removal And Set Up

The Tiiger Auger-Up Stand keeps auger positioned upright for easier removal and reattachment.

Auger-Up quickly deploys and secures to auger with ratchet straps and collar. No tools or ladder required.

Supports Auger Sizes 4.5" Diameter x 4' High and 24" Diameter x 12' High

4.5" Center Cup (Adapter plates available for various pilot bits)

- Reduces injury risk
- Prevent damage to customer property
- Guards against auger tipping when partially dug into the ground for removal
- Stores auger on any surface
- Stores in truck bin or bed
- Used by mechanics for maintenance or repair



Ring Clip Collar
Included With
Auger-Up

DESCRIPTION	PART NUMBER
Auger-Up Stand	AS0050

SPECIFICATIONS	
Collapsed Dimensions	15"W x 15"H x 19"D
Weight	42 lbs.
Load Capacity	500 lbs.





TIGER

A SPARTACO COMPANY

Created By A Lineman For Linemen





TIGER

A SPARTACO COMPANY



195 Internationale Blvd.
Glendale Heights, IL 60139

800.860.6170

www.SpartacoGroup.com



MADE IN USA

PD-2024
REV0818